

**SMART**



State of Massachusetts Animal Response Team

# Operations Guide

## Table of Contents

What is SMART .....	3
Mission Statement .....	3
Goals .....	3
Objectives .....	3
Concept of Operations .....	3
Incident Command System (ICS).....	4
National Incident Management System (NIMS) .....	4
NIMS Integration Center .....	4
Organization.....	5
SMART Operational Teams .....	5
Emergency Request for Assistance .....	8
Massachusetts Emergency Management Agency and the State Emergency Operations Center.....	9
Activation/Notification.....	9
Levels of Emergencies or Disaster and Corresponding State Actions .....	10
ESF Staffing Levels .....	11
Incident Command System – SMART .....	13
SMART Operational Teams .....	14
Incident Command Structure Example – Veterinary Services Team .....	15
Code of Conduct .....	16
Radio Operating Procedures.....	16
Partner Organizations .....	19
Emergency Management Assistance Compact (EMAC).....	24
How Does EMAC Work.....	25
Alphabetical Listing of Terms and Definitions .....	26

## **What is SMART**

State of Massachusetts Animal Response Team (hereinafter referred to as “SMART”) is a network of organizations, agencies, and individuals who are committed to responding to the needs of the animal population in disaster situations. The goal of SMART is to provide a timely and effective response to any intentional or unintentional emergency involving animals. SMART’s role is to help minimize the threat to the health and safety of humans and animals, the economic impact of animal emergencies, and decreases the spread of disease to animals and humans. SMART incorporates many aspects of response: assessment, search and rescue, veterinary services, sheltering, animal control, and deceased animal removal and disposal.

## **Mission Statement**

Provide a timely and effective response to any intentional or unintentional emergency involving animals, including but not limited to bioterrorism, agriterrorism, emerging infectious disease, man-made or natural events.

## **Goals**

- Minimize the threats to the health and safety of animals and humans
- Minimize the economic impact of animal emergencies
- Decrease the spread of disease to animals and humans during any emergencies
- Assist communities as appropriate during state level activations
- Understand the interface between human and animal health

## **Objectives**

- Establish Incident Command structure for SMART
- Establish committees to address SMART issues
- Develop a team building guide to address SMART
- Establish Teams of trained personnel who can respond to emergency issues
- Develop and maintain a SMART website
- Develop a SMART newsletter and publish periodically
- Provide outreach and public education materials through SMART

## **Concept of Operations**

SMART utilizes the principles of the Incident Command System (ICS) and the National Incident Management System (NIMS)

## Incident Command System (ICS)

ICS is a standardized organizational structure used to command, control, and coordinate the use of resources and personnel that have responded to the scene of an emergency. ICS focuses on five functional areas for management of all major incidents: Command, Operations, Planning, Logistics, and Finance/Administration.

- **Command** - sets the objectives and priorities
- **Operations** - develops and conducts all operations
- **Planning** - develops action plans based on collected information
- **Logistics** - provides support, services, and resources to the operations
- **Finance/Administration** - monitors and analyzes costs

## National Incident Management System (NIMS)

On February 28, 2003, President Bush issued Homeland Security Presidential Directive-5. HSPD-5 directed the Secretary of Homeland Security to develop and administer a National Incident Management System (NIMS). NIMS will enable responders at all levels to work together more effectively to manage domestic incidents no matter what the cause, size or complexity.

## NIMS Integration Center

The National Integration Center (NIC) Incident Management Systems Integration Division was established by the Secretary of Homeland Security to provide "strategic direction for and oversight of the National Incident Management System (NIMS)... supporting both routine maintenance and the continuous refinement of the system and its components over the long term." The Center oversees all aspects of NIMS including the development of compliance criteria and implementation activities at federal, state and local levels. It provides guidance and support to jurisdictions and incident management and responder organizations as they adopt the system.



The Center is a multidisciplinary entity made up of federal stakeholders and over time, it will include representatives of state, local and tribal incident management and responder organizations. It is situated within the Department of Homeland Security's Federal Emergency Management Agency.

## **Organization**

The State of Massachusetts Animal Response Team Annex is the plan that provides for the coordination of various federal, state, local, private and voluntary resources in response to the needs of both privately owned and wild animal care needs before, during, and following a significant natural emergency/disaster or man-made event or animal health emergency. The State of Massachusetts Animal Response Team is the network of organizations, agencies, and individuals who are committed to responding to the needs of the animal population in disaster situations in the Commonwealth of Massachusetts.

Emergency response capabilities are organized into different Emergency Support Functions (ESFs). Massachusetts Emergency Support Function 17 (MAESF-17), Animal Protection provides for the overall management, coordination and prioritization of statewide resources to support owned or wild animal needs in the event of an emergency/disaster. MAESF-17 functions are in concert with the State Comprehensive Emergency Management Plan (CEMP), State of Massachusetts Animal Response Team Animal Annex.

MA Department of Agricultural Resources (DAR) is the primary agency with regard to animal health/control issues. The State Veterinarian/designee of the Department of Agricultural Resources is designated as the Team Leader and will coordinate and direct the activities of MAESF-17, Animal Protection. Support and Adjunct Agencies/Organizations are listed in MAESF-17. Animal related services are noted in the SMART Annex and are categorized in functional areas with agencies/organizations that could potentially provide resources.

## **SMART Operational Teams**

In addition to the various federal, state, local, private and voluntary organizations that can be called upon to support SMART, there are seven SMART Operational Teams consisting of trained individuals who respond during a disaster. Any or all of these Teams may be activated, depending on the situation. The Teams that could potentially provide assistance and the functional areas under which they may be activated are listed in the SMART Annex.

All volunteers must be registered before they can help. In order to care for animals during a disaster all volunteers must become registered with a team. The State of Massachusetts reserves the right to turn away any unregistered volunteers. All positions on the team are voluntary. Information pertaining to subjects such as, but not limited to: volunteering, forms completion and minimum training requirements can be found on the SMART website: [www.smart-mass.org](http://www.smart-mass.org)

The Team descriptions and Team Leaders are listed below:

### **Assessment**

The Assessment Team will assess damages and the stability of the area they are activated to. This team will prioritize tasks and determine what, if any other teams should be activated. Members should be able to assess quickly and thoroughly what is needed for a particular situation.

**Team Leaders:** Chief Allen Hoyt: [chief@HANSON-MA.gov](mailto:chief@HANSON-MA.gov)  
Chief Tom Stone: [tstone@easton.ma.us](mailto:tstone@easton.ma.us)

### **Search and Rescue**

The Search and Rescue Team will search for missing, hurt and/or stranded animals. The team will rescue abandoned, hurt and/or stranded animals. Rescued animals will be given to Veterinary Services Team or Shelter Operations Team, depending on the animal's condition. The team will note deceased animals. The team will document all rescues to better facilitate reuniting the animal with its owner. Members must have some animal handling skills.

**Team Leaders:** Mike Brammer: [mbrammer@arlboston.org](mailto:mbrammer@arlboston.org)  
Roger Lauze': [rlauze@mspca.org](mailto:rlauze@mspca.org)

### **Veterinary Services**

The team comprising Veterinary Services will provide acute medical care based on triage of animals. The team will monitor the health of rescued animals and those in sheltering. The team will note the general health of wild animals they encounter and note deceased animals. Veterinarians, technicians and animal care personnel are welcome as members. Members with good organization skills and computer skills are also needed.

**Team Leaders:** Dr. David Schwarz: [labby131@aol.com](mailto:labby131@aol.com)  
Amy Breton: [smartvetgroup@yahoo.com](mailto:smartvetgroup@yahoo.com)

### **Shelter Operations**

Shelter operations will set up shelters to house and care for rescued animals and those of displaced disaster victims. The shelter team will keep detailed information on all animals in custody for owner identification purposes. The shelters will provide adequate accommodations and care dependent on species (i.e. large walking/running area for dogs). Shelter workers, animal care providers and people with animal handling skills are needed for this team. Members with good organization skills and computer skills are also needed.

**Team Leaders:** Ashley Arseneau: [aarseneau@arlboston.org](mailto:aarseneau@arlboston.org)  
Chris Charboneau: [Ccharbonneau@arlboston.org](mailto:Ccharbonneau@arlboston.org)

### **Animal Control Officer**

The Animal Control Officer will assist the Search and Rescue and Shelter Operations teams. The Officer will note abandoned, hurt and deceased animals for the Search and Rescue team to respond to. The Officer will monitor available shelter space. Members must be a current Animal Control Officer in the Commonwealth of Massachusetts.

**Team Leaders:** Emanuel Maciel: [emaciel@ci.new-bedford.ma.us](mailto:emaciel@ci.new-bedford.ma.us)  
Cheryl Malone: [cmalone@town.dennis.ma.us](mailto:cmalone@town.dennis.ma.us)

## **Deceased Animal Removal and Disposal**

The Deceased Animal Removal and Disposal team will locate and dispose of deceased animals to prevent public health issues. The team will document information on all deceased animals for later identification.

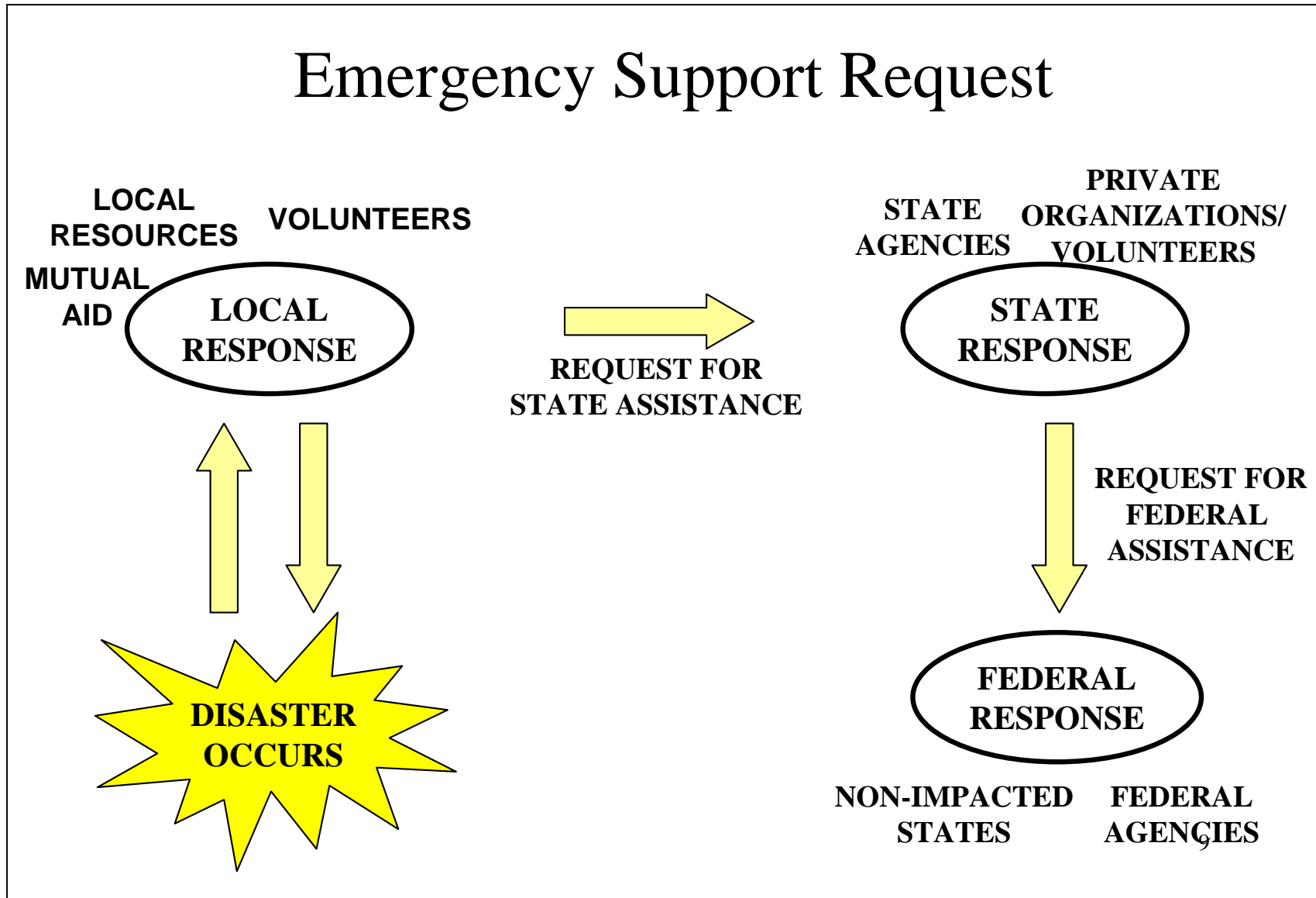
**Team Leaders:** Myles Brown: [myles.brown2@massmail.state.ma.us](mailto:myles.brown2@massmail.state.ma.us)  
Joe Pelczarski: [joe.pelczarski@massmail.state.ma.us](mailto:joe.pelczarski@massmail.state.ma.us)

## **Special Species**

The team comprising Special Species comprises specialists in aquatic and zoo animal medicine and husbandry, wildlife disease surveillance and rehabilitation, exotic animal veterinary care, and laboratory animal medicine. This group works intimately with the Veterinary services group to address the needs of non-traditional pets, livestock, research animals, and wildlife during an emergency. They will provide acute medical care based on triage of animals, will monitor the health of rescued animals, and will survey the general health of wild animals through disease surveillance of live and deceased individuals and populations. Veterinarians, technicians and animal care personnel are welcome as members, especially those with specialized training or practical experience with these specific groups of animals. Members with good organization skills and computer skills are also needed.

**Team Leaders:** Hayley Murphy: [hweston@zoonewengland.com](mailto:hweston@zoonewengland.com)  
Roxanna Smolowitz: [rsmolowitz@neaq.org](mailto:rsmolowitz@neaq.org)

## Emergency Request for Assistance



## **Massachusetts Emergency Management Agency and the State Emergency Operations Center**

The Massachusetts Emergency Management Agency (MEMA) is the state agency responsible for coordinating federal, state, local, voluntary and private resources during emergencies and disasters in the Commonwealth of Massachusetts. MEMA provides leadership to: develop plans for effective response to all hazards, disasters or threats; train emergency personnel to protect the public; provide information to the citizenry; and assist individuals, families, businesses and communities to mitigate against, prepare for, and respond to and recover from emergencies, both natural and man made.

The Operations Division of MEMA maintains and operates the State Emergency Operations Center (SEOC), monitoring emergencies statewide through the Communications Division 24 hours a day, 7 days a week. The SEOC serves as the command and control center for the Commonwealth during an emergency.

The Operations Division manages and coordinates emergency response efforts for the Commonwealth. Through MEMA regional offices, it coordinates the response to requests for aid from local authorities upon depletion of their local resources.

### **Activation/Notification**

Generally, when an emergency/disaster is imminent or occurs in the Commonwealth of Massachusetts, the State Emergency Operations Center at MEMA Headquarters in Framingham, Massachusetts is activated and representatives from selected state agencies gather for decision-making. Assistance provided to address disaster animal issues, in a declared emergency/disaster, is a coordinated effort of local, state, federal, private and volunteer organizations.

When the SEOC is activated by the Director of the Massachusetts Emergency Management Agency, the SEOC and its associated facilities will function under the Incident Command System (ICS). In the event of an emergency or disaster warranting activation of the SEOC, MEMA will notify the MAESF-17 primary agency (MA Department of Agricultural Resources) Team Leader. The MAESF-17 Team Leader will notify the appropriate support and adjunct agencies/organizations to begin mobilization of resources and personnel and to commence operations. Roles and responsibilities of primary, support and adjunct agencies/organizations are identified in the SMART Animal Annex.

Support and/or adjunct agencies/organizations will be notified by one of the following methods: Telephone, WebEOC, Pager, Email.

Radios may be issued on scene. Sign-out procedures and distribution methods will be determined at that time. Radio Operating Procedures are described in the SMART Operations Guide.

## Levels of Emergencies or Disaster and Corresponding State Actions

LOCAL ACTIONS		STATE ACTIONS	
Levels of Emergencies or Disaster	Initiating Events	MEMA Operational Levels	Corresponding Actions
I	Emergency incident for which local response capabilities are likely adequate.	I	Situation managed by the Chief of Operations or designated assistant as part of day-to-day operation. Situation is monitored and, if needed, appropriate state agencies are notified to take action as part of their everyday responsibilities.
II	A Level I incident begins to overwhelm local response capability. Some state assistance possible.	II	Selected members of the MEMA staff provide assistance (Ops Chief, Planning Chief, Como Tech, IT, PIO, GIS at a minimum), as needed, MAESF primary agencies (MANG ESF-13, MSP ESF-16, MHD ESF-1, DPH ESF-8 core ESF's up to 10 ESF categories activated) may be activated and support agencies placed on standby. Governor advised of the situation.
III	Situation continues to intensify, with the potential to escalate. Local States of Emergency declared. State and Federal response and recovery assistance is required.	III	Full activation of State EOC (11+ ESF's SEOC Level 3 Staffing). Governor may declare a State of Emergency. MAESF primary and support agencies send representatives to EOC as requested. Joint Information Center activated. Possible deployment of FEMA advance element to the SEOC. Possible activation of the Federal Response Plan.
IV	Widespread threats to the public safety. Large-scale state and Federal response and recovery assistance required.	IV	Full activation of SEOC. All MAESF primary and support agencies send representatives to the SEOC (Branch Managers of ESF's implemented). Governor has declared a State of Emergency. JIC activated. Rapid Impact Assessment Teams deployed. Federal Response Plan activated. Military assistance may be requested.

## ESF Staffing Levels

ESF Staffing Level 2:

ESF-1 (MA Highway Department)

ESF-2 (Dispatch and Communications Technician)

ESF-5 (Operations Section Chief/Planning Section Chief)

ESF-8 (MA Department of Public Health)

ESF-13 (MA National Guard)

ESF-14 (Public Information Officer)

ESF-16 (MA State Police)

MIS (Management Information Systems)

FEMA\*

ESF Staffing Level 3:

Up to 10 ESFs

FEMA\*

ESF Staffing Level 4:

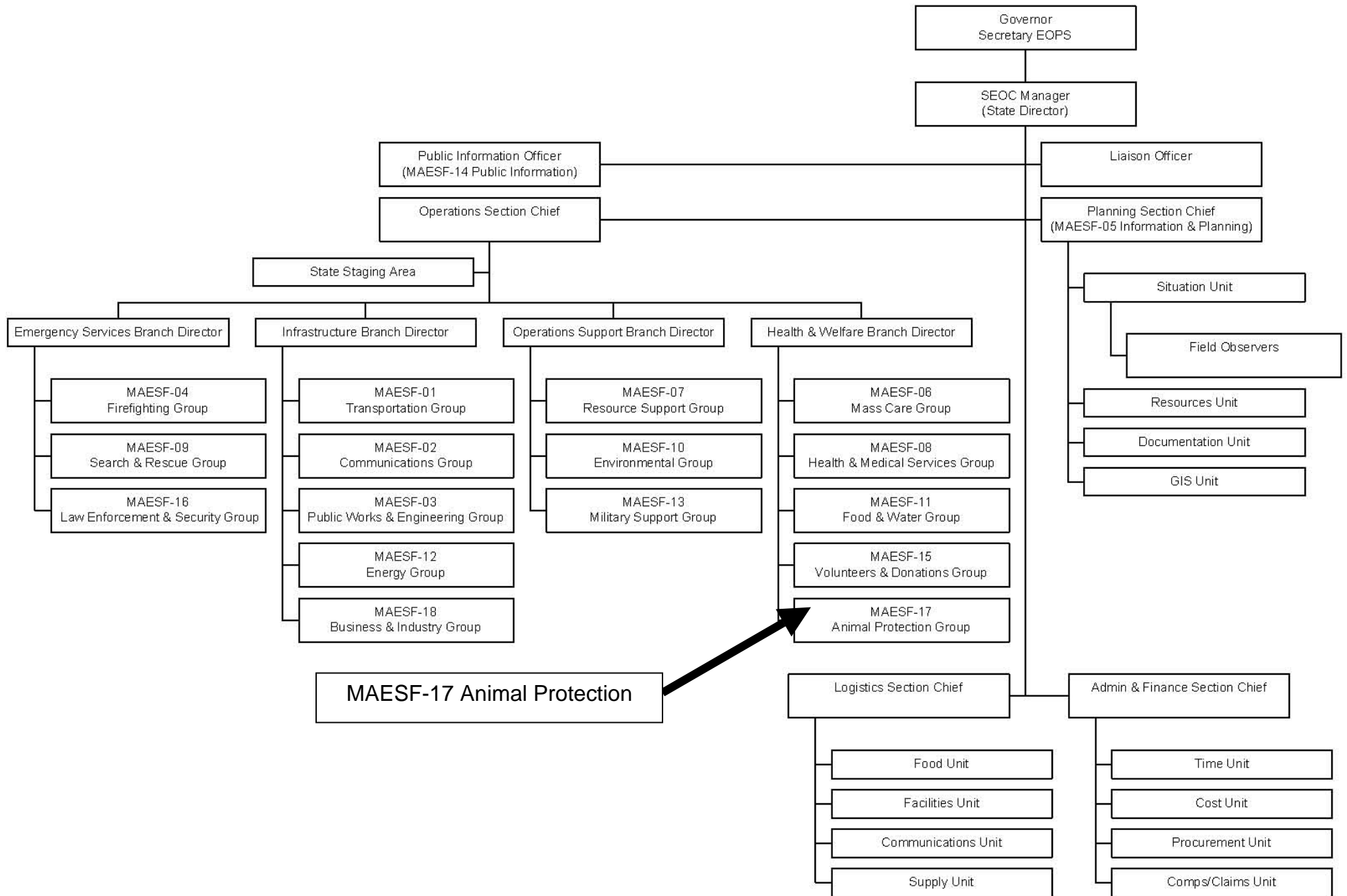
All ESFs filled

These are all recommended levels. If situation warrants, changes can be made.

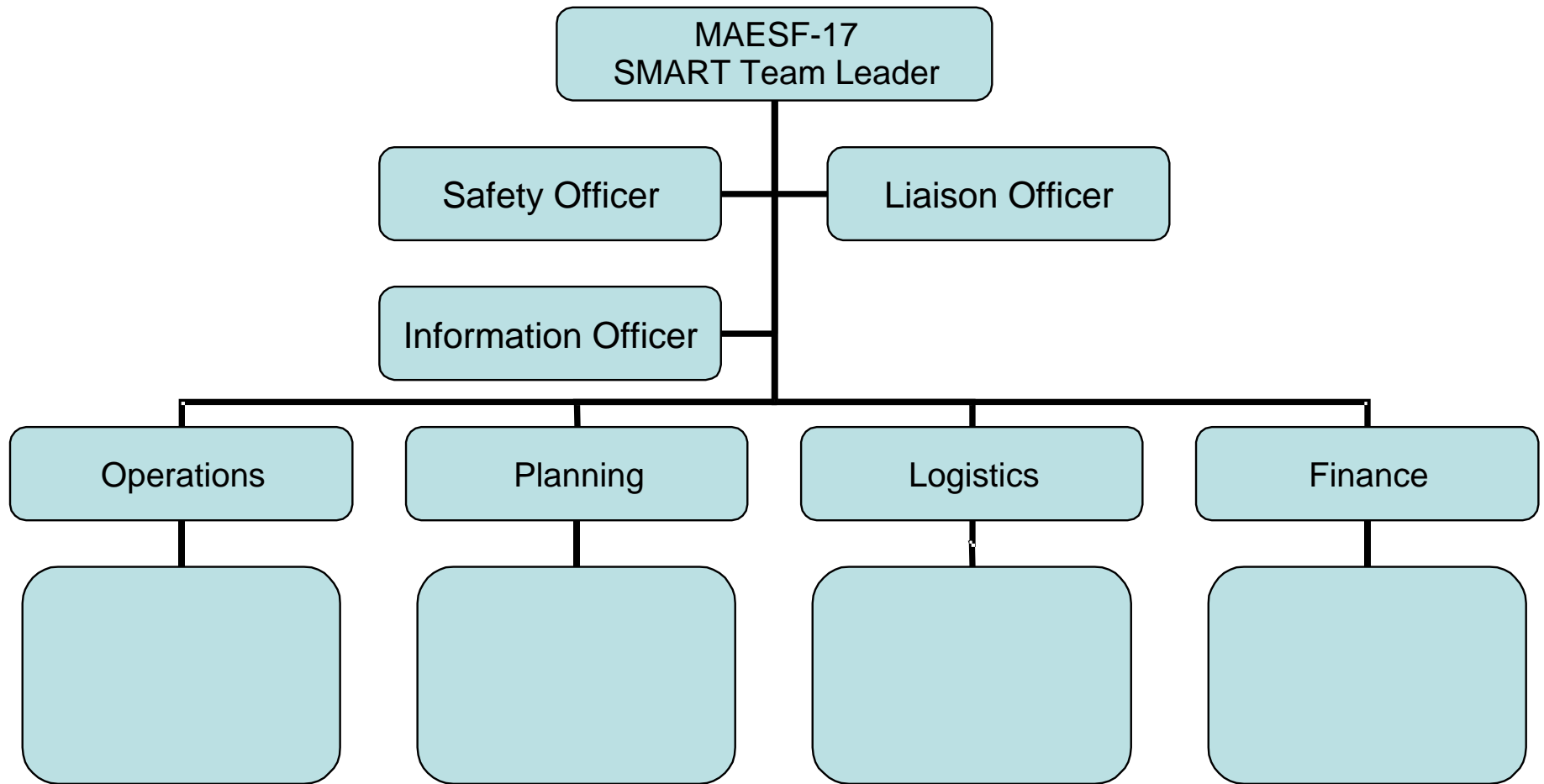
\* FEMA- Always invited/ Highly recommended for Level 3

---

# State Emergency Operations Center Command Structure



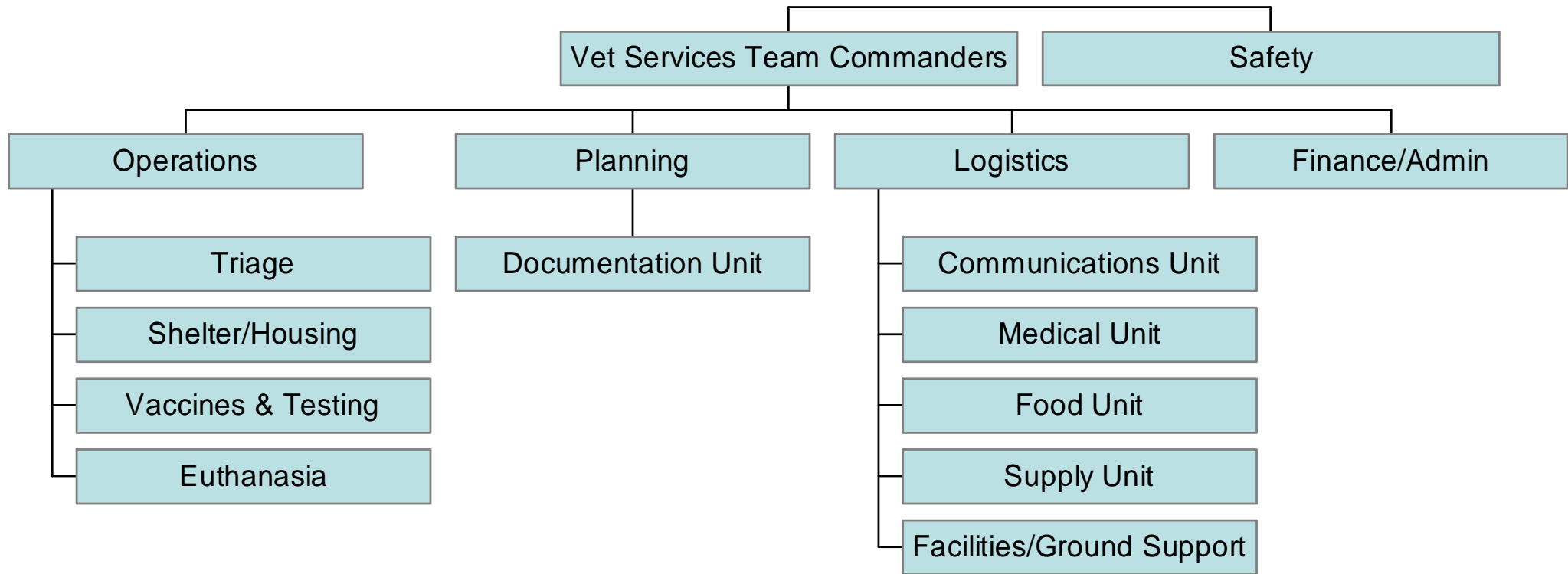
## Incident Command System – SMART



## SMART Operational Teams



## Incident Command Structure Example – Veterinary Services Team



## **Code of Conduct**

All volunteers of SMART, in delivering SMART services and in all other SMART activities, shall meet the following standards of conduct:

No volunteer shall:

- Authorize the use of or use for the benefit or advantage of any person, the name, emblem, endorsement, services, or property of the SMART, except in conformance with SMART policy.
- Accept or seek on behalf of any person, any financial advantage or gain of other than nominal value offered as a result of the volunteer or employee's affiliation with the SMART.
- Publicly use any SMART affiliation in connection with the promotion of partisan politics, religious matters, or positions on any issue not in conformity with the official position of the SMART.
- Disclose or use any confidential SMART information that is available solely as a result of the volunteer's affiliation with the SMART to any person not authorized to receive such information or use to the disadvantage of the SMART any such confidential information, without the express authorization of the SMART.
- Knowingly take any action or make any statement intended to influence the conduct of the SMART in such a way as to confer any financial benefit on any person, corporation, or entity in which the individual has a significant interest or affiliation.
- Operate or act in any manner that is contrary to the best interests of the SMART.

Operate or act in a manner that creates a conflict with the interests of the SMART and any organization in which the individual has a personal, business, or financial interest. The individual shall disclose such conflict of interest to the MEMA point of contact, as applicable, upon becoming aware of it. Where required, the individual shall absent him or herself during deliberations, and shall refrain from participating in any decisions or voting in connection with the matter.

## **Radio Operating Procedures**

### **FCC RADIO REGULATIONS**

The Federal Communication Commission regulates the use of radios in the United States. FCC regulations set forth the technical, operational, and administrative requirements for land mobile radio systems. Since the Commission can levy monetary fines and suspend or revoke the licenses of rule violators, you should always keep these rules in mind. The following items in this section list the most important operating rules. They are not intended to cover all the rules nor quote them verbatim.

FCC rules require you to restrict your radio transmissions to the minimum practical time needed to transmit your message. You must also monitor the radio channel before transmitting to prevent interference to other users of the channel.

Do not intentionally interfere with another radio unit by transmitting at the same time. Causing intentional interference to another radio unit is illegal.

These radios are licensed as public safety radios. The radios should not be used for hobby related communications, fooling around, idle chitchat, etc.

Refrain from using obscene, indecent, and profane language on the radio. It may be offensive to others on the frequency and is prohibited by FCC regulations.

FCC rules dictate that you must use your given unit identifier to identify yourself on the radio. There may be several "Bobs" or "Bills" on the air at the same time. Your radio identifier immediately tells other operators who you are and where you are.

It is against FCC regulations to transmit false emergency information on a radio. Always make certain that you use the words "This is a drill" before and after you transmit any fictitious or simulated information. Drills and exercises make use of simulated emergency information and you must carefully separate real and false information.

Failure to comply with FCC rules and regulations can bring fines of \$10,000, or a prison sentence of up to two years, or both. Use the radio wisely and you should have little problems complying with these FCC rules.

## RADIO MESSAGES

The urgency to communicate this information can be classified into two generic categories.

- URGENT MESSAGES are the most important message category. Urgent messages contain information that reports immediate danger to life and property.
- ROUTINE MESSAGES are the second most important message category. A routine message contains information that reports "potential" danger or information that must be communicated to prevent wasted time, money, or duplication of effort. Routine messages are of lesser priority and must give way to URGENT messages.

## RADIO OPERATING PROCEDURE

The following are examples of radio transmissions that demonstrate correct radio usage:

Shelter Operations Team Leader: Veterinary Services Team Leader this is Shelter Operations Team Leader

Veterinary Services Team Leader: Go ahead Shelter Operations Team Leader

Shelter Operations Team Leader: Advise when operational and ready to accept incoming animals

Veterinary Services Team Leader: Message received. Veterinary Services Team Leader clear.

This example shows a routine message that is directed to Veterinary Services Team Leader. It will be the standard communications practice in most cases. Notice that the message required only four radio transmissions and the whole procedure takes less than 20 seconds. Never assume that a message has been received unless you receive verification. In this case there is no need for Shelter Operations Team Leader to make another transmission because Veterinary Services Team Leader has verified the receipt of the message. The use of the word "clear" or "out" at the end of a message indicates that you have finished communicating and you expect no further message.

IT IS POSSIBLE FOR THE GENERAL PUBLIC TO INTERCEPT THESE RADIO TRANSMISSIONS. RECEPTION OF INFORMATION DURING A DRILL OR EXERCISE MUST ALWAYS START AND TERMINATE WITH THE WORDS "THIS IS A DRILL" or "THIS IS A TEST EXERCISE." This will prevent concern to the general public and prevent any undue panic. It is important that personnel taking part in a drill understand when exercise public safety information is being exchanged. If you have to report a real emergency during a drill or exercise, make certain that the person to whom you are reporting the information understands it.

#### GENERAL CONSIDERATIONS OF RADIO OPERATION

When using the radio, press the transmit button and WAIT TWO SECONDS before you begin to speak.

Speak slowly and pronounce each word clearly.

Listen before transmitting by pushing monitor button. Do not interrupt a conversation in progress.

Leave a short pause between each transmission. Someone may have a priority message to transmit.

Remember you share the channel, keep all transmissions as short as possible.

Be sure the other station verifies receipt of your message.

## **Partner Organizations**

### **American Red Cross**

The American Red Cross, a humanitarian organization led by volunteers, guided by its Congressional Charter and the Fundamental Principles of the International Red Cross Movement, will provide relief to victims of disasters and help people prevent, prepare for, and respond to emergencies.

Website: [www.redcross.org](http://www.redcross.org)

### **Animal Control Officers Association of MA**

The Animal Control Officers Association of Massachusetts was founded in 1980 and is dedicated to promote and improve through education and training the skills, professionalism, knowledge of applicable animal control laws, job security and personal safety of animal control officers employed part-time or full-time by cities, towns, other municipalities or counties located within the commonwealth of Massachusetts. The Association will inform and educate governmental officials and the general public of Massachusetts in the enforcement of applicable animal control laws and thereby the prevention of cruelty to animals.

Website: [www.acoam.info](http://www.acoam.info)

### **Animal Rescue League**

The Animal Rescue League is a non-profit organization dedicated to rescuing domesticated animals and wildlife from suffering, cruelty, abandonment, and neglect. Since 1899 we have advocated the philosophy of our founder, Anna Harris Smith, that "kindness uplifts the world". The Animal Rescue League provides rescue and law enforcement services and promoting a compassionate and responsible attitude towards all living beings.

Website: [www.arlboston.org](http://www.arlboston.org)

### **Department of Environmental Protection**

The Massachusetts Department of Environmental Protection (DEP) is the state's environmental regulatory agency responsible for protecting human health and the environment by ensuring clean air and water, the safe management and disposal of solid and hazardous wastes, the timely cleanup of hazardous waste sites and spills, and the preservation of wetlands and coastal resources. Under Article 97 of the Massachusetts Constitution DEP is the guarantor of the people's right to "clean air and water", as well as "the natural scenic, historic and aesthetic qualities of the environment".

Website: [www.mass.gov/dep](http://www.mass.gov/dep)

### **Department of Fire Services**

The mission of the Department of Fire Services is to provide the people of Massachusetts the ability to create safer communities through coordinated training, education, prevention, investigation, emergency response and leadership. The State Fire Marshal heads the sole agency within state government responsible for overall coordination of fire service policy and operations. Within DFS is the [Massachusetts Firefighting Academy](#), providing fire training to municipal fire service personnel at no cost to the cities and towns. The [Office of the State Fire Marshal](#) preserves life and protects property through public education, investigation, regulation, law enforcement, and technical assistance to fire departments, the public, and regulated trades and industries. [Hazardous Materials Response](#) oversees the operation of the six Hazardous Materials Regional Response Teams throughout the state and has as its governing body the [Hazardous Materials Mitigation Emergency Response Advisory Board](#).

Website: [www.mass.gov/dfs](http://www.mass.gov/dfs)

### **Department of Fish and Game**

The mission of the Department of Fish and Game is to exercise stewardship responsibility over the Commonwealth's marine and freshwater fisheries, wildlife species, plants, and natural communities, as well as the habitats required to support these resources; to conserve and restore the state's rivers, streams, lakes, ponds, wild lands, and coastal waters; and to ensure the responsible practice of hunting, trapping, and fishing both inland and marine.

Website: [www.mass.gov/dfwele](http://www.mass.gov/dfwele)

### **Department of Public Health**

The Department of Public Health mission is to serve the people of the Commonwealth, particularly the underserved, and to promote healthy people, healthy families, healthy communities and healthy environments through compassionate care, education and prevention. Their mission includes: working to help all people reach their full potential for health; ensuring that the people of the Commonwealth receive quality health care and live in a safe and healthy environment; building partnerships to maximize access to affordable, high quality health care; empowering communities to help themselves; and protecting, preserving and improving the health of all the Commonwealth's residents.

Website: [www.mass.gov/dph](http://www.mass.gov/dph)

### **Executive Office of Environmental Affairs**

The Executive Office of Environmental Affairs was established by the Legislature in 1975. The General Laws of [Massachusetts Chapter 21A Section 2](#) outlines the overall duties and functions; inter-agency information, services and plans; and filing applications that are the purview of the office. The overall mission of the Massachusetts Executive Office of Environmental Affairs (EOEA) is to safeguard the environment and public health from manmade and natural threats and to preserve, protect, and enhance the natural resources of the Commonwealth.

Website: [www.mass.gov/eoea](http://www.mass.gov/eoea)

### **Fire Chief's Association of Massachusetts**

The purpose of the Fire Chief's Association of Massachusetts is to further the professional advancement of the fire service; to serve as the recognized Fire Chiefs' organization for the exchange of ideas, knowledge and experience in the area affecting fire prevention, fire extinguishment, and the safety of life and property from fire; and to promote efficient fire administration.

Website: [www.fcama.org](http://www.fcama.org)

### **Humane Society of the United States**

The mission of The Humane Society of the United States is to create a humane and sustainable world for all animals, including people, through education, advocacy, and the promotion of respect and compassion. The Humane Society of the United States makes a difference in the lives of animals here at home and worldwide. The HSUS is dedicated to creating a world where the relationship with animals is guided by compassion. We seek a truly humane society in which animals are respected for their intrinsic value, and where the human-animal bond is strong.

Website: [www.hsus.org](http://www.hsus.org)

### **Massachusetts Animal Coalition**

MAC, Inc is a statewide, not-for-profit organization of animal professionals. It was formed in February of 2000 to help promote collaboration among animal care professionals. Massachusetts Animal Coalition members have created strong alliances and developed new programs and initiatives. MAC members include animal control officers, veterinarians, representatives from other shelters (open admission and no-kill), canine breed rescue, feline rescue, pet supply retailers, cruelty investigators, attorneys, representatives of state agencies, humane societies, state veterinary associations, and veterinary schools.

Website: [www.massanimalcoalition.org](http://www.massanimalcoalition.org)

### **Massachusetts Association of Emergency Management Professionals**

Massachusetts Association of Emergency Management Professionals represents professionals in both the public and private sectors who have a responsibility for, or an interest in emergency management -- and making Massachusetts a safer place to live and work. As our logo indicates, we accomplish this through prevention, preparedness, coordinated response and recovery efforts.

Website: [www.maemp.org](http://www.maemp.org)

### **Massachusetts Chiefs of Police Association**

The Massachusetts Chiefs of Police Association, Inc. is a nonprofit corporation, which was founded in 1887 and incorporated in 1949. Their mission is to advance professional police services; promote enhanced administrative, technical, and operational police practices; foster cooperation and the exchange of information and experience among police leaders and police organizations of recognized professional and technical standing throughout the Commonwealth.

Website: [www.masschiefs.org](http://www.masschiefs.org)

### **Massachusetts Department of Agricultural Resources**

The Massachusetts Department of Agricultural Resources' mission is to support, promote and enhance the long-term viability of Massachusetts agriculture with the aim of helping this state's agricultural businesses become as economically and environmentally sound as possible. By so doing, it is hoped that the farmers will continue to support and maintain thousands of acres of valuable open space for the benefit of the state's economy and environment. The Department's divisions and bureaus are working to fulfill this mission through a variety of initiatives and programs.

Website: [www.mass.gov/dar](http://www.mass.gov/dar)

### **Massachusetts Emergency Management Agency**

The Massachusetts Emergency Management Agency (MEMA) is the state agency responsible for coordinating federal, state, local, voluntary and private resources during emergencies and disasters in the Commonwealth of Massachusetts. MEMA provides leadership to: develop plans for effective response to all hazards, disasters or threats; train emergency personnel to protect the public; provide information to the citizenry; and assist individuals, families, businesses and communities to mitigate against, prepare for, and respond to and recover from emergencies, both natural and man made.

Website: [www.mass.gov/mema](http://www.mass.gov/mema)

### **Massachusetts Society for the Prevention of Cruelty to Animals**

The Massachusetts Society for the Prevention of Cruelty to Animals is a national and international leader in animal protection and veterinary medicine. Founded in 1868, it is the second-oldest humane society in the United States. Their services include animal protection and adoption, advocacy, humane education, law enforcement and the highest-quality veterinary care available anywhere in the world. They provide direct hands-on care to more than 250,000 animals each year.

Website: [www.mspca.org](http://www.mspca.org)

### **Massachusetts Veterinary Medical Association**

Since its founding as the Massachusetts Veterinary Association in 1884, Massachusetts Veterinary Medical Association and its members have provided "professional caring for the health and welfare of animals and society". Members hail from all aspects of the profession—clinical practitioners, academics, researchers, and institutional veterinarians—and from all stages of their careers, graduation through retirement. Through the Massachusetts Veterinary Medical Association, nearly 1,000 members work together for the common good of veterinary medicine, while achieving personal and professional growth.

Website: [www.massvet.org](http://www.massvet.org)

### **Massachusetts Veterinary Technician Association**

The Massachusetts Veterinary Technician Association is a professional organization representing and promoting the profession of veterinary technology. The Massachusetts Veterinary Technician Association provides direction, education, support and coordination for its members, and works with other organizations for the competent care and humane treatment of animals

Website: [www.massvta.com](http://www.massvta.com)

### **New England Aquarium**

On June 20, 1969 the New England Aquarium opened its doors to the public for the first time. The Aquarium was designed with the intention of providing an underwater experience for the visitor and of being a cultural institution that would reconnect Boston to its waterfront. Several programs have been developed in order to help preserve and bring a better understanding of marine life and the exhibits have been under constant expansion and renovation. These include the Giant Ocean Tank, opened in 1970 that was, at the time, the largest circular, salt water tank in the world and the new Matthew and Marcia Simons IMAX®, the only 3D theatre in Boston. The Aquarium continues its tradition to serve as a leader in research, education and conservation.

Website: [www.neaq.org](http://www.neaq.org)

### **Petfinder.Com**

Petfinder.com was started in 1995 by Jared and Betsy Saul with the mission of using the internet and the resources it provides to end the euthanasia of adoptable pets. In its first 10 years Petfinder.com has expanded its reach beyond animal related sites and is now the 124<sup>th</sup> largest website on the internet. The Petfinder.com Foundation is a public charity with a mission to assist animal shelters and placement groups in the heroic work that they do. Petfinder.com is free to use for both animal shelters and potential adopters.

Website: [www.petfinder.com](http://www.petfinder.com)

### **Tufts School of Veterinary Medicine**

Cummings School of Veterinary Medicine at Tufts University was founded in 1978 and is located in North Grafton, Massachusetts. The 585-acre campus includes three teaching hospitals, the Hospital for Large Animals, the Henry and Lois Foster Hospital for Small Animals and the Wildlife Clinic in the Bernice Barbour Wildlife Medicine Building. Academic instruction is offered in practical, modern facilities including the Franklin M. Loew Veterinary Medical Education Center, the Webster Family Veterinary Library, the David McGrath Veterinary Teaching Laboratory, the Luke and Lily Lerner Spay/Neuter Clinic, the Agnes Varis Lecture Hall and a 250-acre working farm.

Website: [www.tufts.edu/vet/](http://www.tufts.edu/vet/)

### **United States Department of Agriculture**

USDA is the steward of the nation's 192 million acres of national forests and rangelands and is the country's largest conservation agency, encouraging voluntary efforts to protect soil, water, and wildlife on the 70 percent of America's lands that are in private hands. USDA brings housing, modern telecommunications, and safe drinking water to rural America. USDA is responsible for the safety of meat, poultry, and egg products and is a research leader in everything from human nutrition to new crop technologies. USDA helps ensure open markets for U.S. agricultural products and provides food aid to needy people overseas. USDA leads the Federal anti-hunger effort with the Food Stamp, School Lunch, School Breakfast, and the WIC Programs.

Website: [www.usda.gov](http://www.usda.gov)

### **National Veterinary Response Team - One**

The five National Veterinary Response Teams are part of Health and Human Services and the National Disaster Medical System. The NVRT are highly trained teams composed of veterinarians, veterinary technicians, toxicologists and other medical and lay support personnel. They can deploy within 12-24 hours to a disaster area and are self sufficient for 72 hours. When a federal disaster, either natural or man made, is declared and the State Veterinarian has made a request for NVRT assistance, teams are deployed to the affected area. Teams are capable of performing assessments of the veterinary infrastructure, establishing a veterinary field hospital, animal decontamination/hazardous materials, providing care for urban search and rescue and cadaver dogs, and identifying public health issues.

### **Zoo New England**

Zoo New England is dedicated to teaching wildlife and wild land preservation through responsible management and exhibition of wildlife. The mission is to inspire humankind to respect our natural world. Zoo New England is dedicated to caring for and sharing animals and their habitats, participating in local and global conservation programs, and providing an experience that fosters an ethic of care and wonder towards the environment.

Website: [www.zoonewengland.com](http://www.zoonewengland.com)

### **Emergency Management Assistance Compact (EMAC)**

The Emergency Management Assistance Compact is an interstate agreement, which enables entities to provide mutual assistance during times of need. EMAC was ratified by Congress and signed into law, in 1996, (Public Law 104-321). EMAC offers state-to-state assistance during Governor declared state of emergencies and offers a responsive and straightforward system for states to send personnel and equipment to help disaster relief efforts in other states. When resources are overwhelmed, EMAC helps to fill the shortfalls.

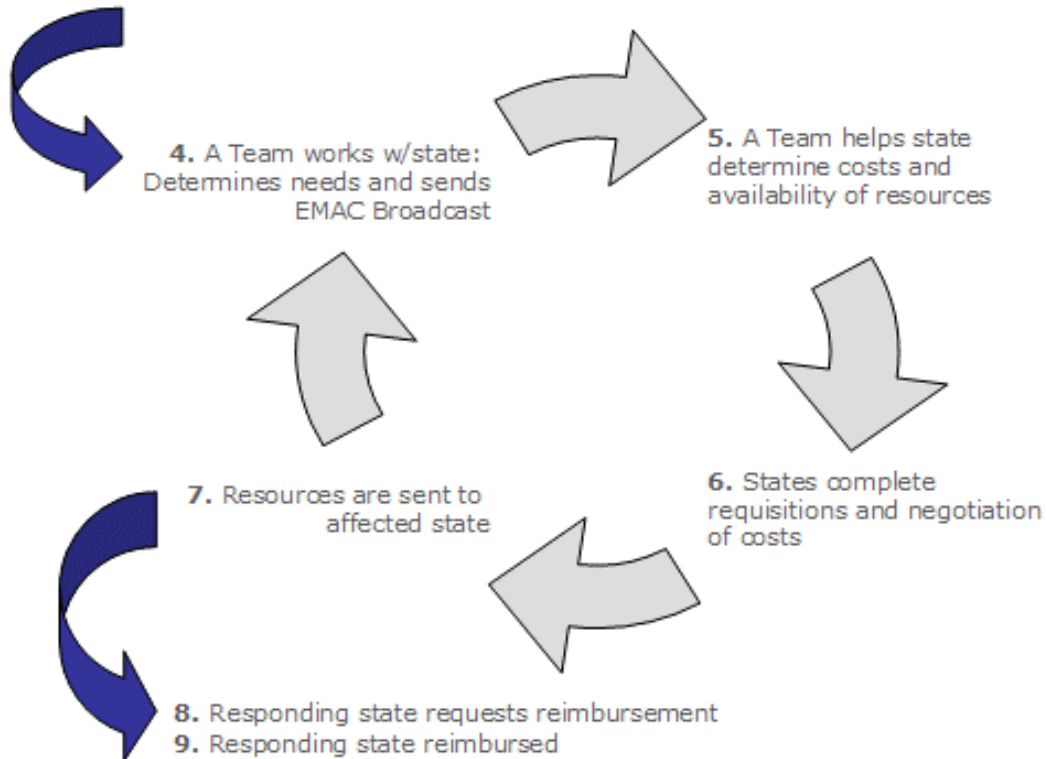
EMAC establishes a firm legal foundation: Once the conditions for providing assistance to a requesting state have been set, the terms constitute a legally binding contractual agreement that make affected states responsible for reimbursement. The EMAC legislation solves the problems of liability and responsibilities of cost and allows for credentials to be honored across state lines.

EMAC provides fast and flexible assistance: EMAC allows states to ask for whatever assistance they need for any type of emergency, from earthquakes to acts of terrorism.

## How Does EMAC Work

EMAC is administered by NEMA, The National Emergency Management Association, who provides the day to day support and technical backbone for EMAC education and operations. During the times of an emergency, NEMA staff work with EMAC Member States to ensure that a smooth relay of information passes through the EMAC system to coordinate relief efforts. In the simplest of terms, EMAC works as follows:

1. Governor issues state of emergency
2. Authorized Representative from the affected state alerts EMAC National Coordinating Group (NCG)
3. Affected state requests A-Team deployment



EMAC can be used for ANY capability one member state has that can be shared with another member state. So long as there is a governor declared state of emergency, EMAC can be called to action and used. Massachusetts is an EMAC Member State.

## Alphabetical Listing of Terms and Definitions

This glossary of terms and definitions provides a basic understanding of the resources commonly used and/or exchanged during a disaster.

### A

#### Advanced Life Support (ALS) Ambulance

An ambulance service capable of delivering advanced skills performed by Emergency Medical Services (EMS) practitioners (e.g., intravenous [IV] fluids and drug administration).

#### Air Ambulance

A rotary-wing aircraft configured, staffed, and equipped to respond, care for, and transport patients. A rotary-wing aircraft must be approved/licensed by a State to do so.

#### Air Conditioner/Heater

A specialized climate-controlled piece of equipment used to support cooling and/or heating requirements within enclosed structures. Requires mobilization to the desired site, along with set-up requirements, such as power hookup and duct installation. Amps can range from 24 to 260 or more. Equipment used to accommodate schools and malls to small office and tent settings.

#### Air Search and Rescue Team

Team provides search and rescue emergency airlift and other special services at the request of, and to support, State and county agency needs.

#### Air Search Team (Fixed-Wing)

Team provides airborne search, emergency airlift, airborne communications, and other special services. Varying levels of specialized management support and command and control capabilities are included in team structures.

#### Air Tanker (Fixed-Wing Firefighting Aircraft Tanker)

Any fixed-wing aircraft certified by the Federal Aviation Administration (FAA) as being capable of transport and delivery of fire retardant solutions.

#### Airborne Communications Relay Team (Fixed-Wing), Civil Air Patrol (CAP)

A CAP Airborne Communications Relay Team provides airborne communications relay using fixed-wing platforms to support Federal, State, and local agency needs. Relays are primarily conducted through aircrews, but can also be accomplished through electronic repeaters carried aboard Civil Air Patrol (CAP) aircrafts. Varying levels of specialized management support and command and control capabilities are included in team structures.

#### Airborne Reconnaissance (Fixed-Wing)

An airborne reconnaissance fixed-wing observation aircraft is capable of flying back video or still imagery from an incident/disaster scene.

#### Airborne Transport (Fixed-Wing) Team, Civil Air Patrol (CAP)

A CAP Airborne Transport (Fixed-Wing) Team provides limited airborne transportation and emergency airlift to support Federal, State, and local agency needs using light fixed-wing platforms owned by the Civil Air Patrol (CAP). Varying levels of specialized management support and command and control capabilities are included in team structures.

#### Aircraft Rescue Firefighting (ARFF)

A motor-driven vehicle, designed and constructed for the purpose of aircraft rescue and fighting fires and capable of delivering Class B Foam, providing a specified level of pumping, water, hose, and rescue capacity and personnel.

#### All-Terrain Cranes

A self-propelled, all-terrain, hydraulic crane capable of traveling over primary, secondary, and off-road surfaces at the tactical support level. Technical characteristics include diesel engine, power shift transmission, three-mode steering, and independently controlled hydraulic outriggers telescoping boom. Comes in various lifting capabilities and is used for construction, maintenance, bridging, and re-supply activities. Mobilization of larger all-terrain cranes requires tractor-trailer support for booms and jibs along with additional escort services.

#### Alpine Search and Rescue Team (Snow and Ice Rescue)

Team conducts search and rescue operations for individuals in a high-altitude alpine environment.

#### Ambulance Strike Team

An Ambulance Strike Team is a group of five ambulances of the same type with common communications and a leader. It provides an operational grouping of ambulances complete with supervisory elements for organization command and control. The strike teams may be all ALS or all BLS.

#### Ambulance Task Force

An Ambulance Task Force is a group of any combination of ambulances, within span of control, with common communications and a leader.

#### Animal Health Incident Management Team

Team provides overall management of animal-related volunteers and donations.

#### Animal Rescue Team

A team proficient in animal handling and capture and management (minimum teams of two). Environments include water (swift water and flood), wildfire, and hazardous materials (HazMat) conditions. Operations include communications and/or evacuations to effect animal rescue.

### Animal Health Technician

Technician performs variety of animal healthcare duties to assist veterinarians in settings such as veterinarians' clinics, zoos, research laboratories, kennels, and commercial facilities. Prepares treatment room for examination of animals and holds or restrains animals during examination, treatment, or inoculation.

### Animal Sheltering Team

A team proficient in animal handling, animal care, and animal shelter management and manages the setup, management, and staffing of temporary animal shelters.

### Animal Treatment Team - Small

A self-equipped team proficient in the medical treatment of companion animals affected by disasters.

### Area Command Team, Firefighting

An Area Command Team is an interagency organization under the auspices of NWCG (1) oversee the management of multiple incidents that are each being handled by an incident management team (IMT) organization; or (2) to oversee the management of a very large incident that has multiple IMTs assigned to it. Area Command has the responsibility to set overall strategy and priorities, allocate critical resources based on priorities, ensure incidents are properly managed, and that objectives are met and strategies followed.

## B

### Backhoe Loader (Wheel Loader; Backhoe)

This is dual-purpose equipment used for loading materials and excavating. Components are located at each end of the equipment. The loading attachments are usually to the front end and the excavating attachment is to the rear. Equipment is available with all-wheel or two-wheel drive. Various sizes are available. Mobilization can be self-propelled and/or on a flat bed trailer. Refer to definitions of wheel loaders (medium to small) and hydraulic excavators for a sampling of capabilities.

### Basic Life Support (BLS) Ambulance

An ambulance service capable of delivering basic emergency interventions performed by Emergency Medical Services (EMS) practitioners trained and credentialed to do so (e.g., splinting, bandaging, oxygen administration).

### Biological Agent

Living organisms or the materials derived from them (such as bacteria, viruses, fungi, and toxins) that cause disease in or harm to humans, animals, or plants, or cause deterioration of material.

### Boat, Fire

A vessel or watercraft designed and constructed for the purpose of fighting fires providing specified level of pumping capacity. The boat is designed with the ability to carry firefighting foam and personnel for the extinguishments of fires in the marine environment.

### Bomb Squad/Explosives Teams

A police unit specializing in the investigation and disarming of suspected explosive devices.

### Bomb Suits

Suits made of Kevlar(r) (inner material) and Nomex 3 (outer material to protect from fire).

### Breathing Apparatus Support (SCBA Support; Breathing Air, Firefighting)

A mobile unit designed and constructed for the purpose of providing specified level of breathing air support capacity and personnel capable of refilling self-contained breathing apparatus (SCBA) at remote incident locations.

### Brush Patrol Unit, Firefighting (Brush Patrol)

Any light, mobile vehicular unit with limited pumping and water capacity for off-road operations.

## C

### Canine Recovery Team (Cadaver Dog Team; K-9 Recovery Team)

Team provides highly trained air scent recovery dog teams for search and recovery operations for deceased victims.

### Canine Search Team (Search Dog Team; Dog Rescue Team; K-9 Rescue Team)

Team provides highly trained search dog teams for search and rescue operations for living and deceased victims in a variety of environments. Teams can be broken into three capabilities: air scent (primary), tracking/trailing, and disaster dogs.

### Cave Search and Rescue Team (Technical Rescue Team)

Team performs search and rescue services to locate and remove injured, lost, or deceased individuals from caves and caverns. Team members work in totally dark environments that may include vertical drops, narrow or small spaces, boulder fields and scree slopes, cold, and water hazards.

### Chemical/Biological (C/B) Protective Ensemble

A compliant vapor-protective ensemble that is also certified as being compliant with the additional requirements for protection against C/B warfare agents such as vapors, gases, liquids, and particulate. (National Fire Protection Association [NFPA] Standard # 1991)

### Chemical Warfare Agent

A chemical substance (such as a nerve agent, blister agent, blood agent, choking agent, or irritating agent) used to kill, seriously injure, or incapacitate people through its physiological effects.

### Chillers and Air Handlers

A portable system that produces cold water through a series of components. When equipped with an air handler, cold air is generated and distributed. Requires mobilization to the desired site along with setup requirements, such as power hookup, water connections, and duct installation.

#### Collapse Search and Rescue Team (Technical Rescue Team)

Team responds to locate, rescue, and recover individuals trapped in a fallen structure or buried in structural collapse.

#### Communications Support Team, Civil Air Patrol (CAP)

A CAP Communications Support Team establishes and maintains CAP communications infrastructure in support of Federal, State, and local agencies.

#### Confined Space Search and Rescue Team (Mine Search and Rescue)

Team provides search and rescue services to individuals in an enclosed area with limited entry or egress, which has a configuration not designed for human occupancy, such that an entrant could become trapped or asphyxiated. An Occupational Safety and Health Administration (OSHA) permit is required for confined space operations.

#### Crawler Cranes

Crawler cranes have a steel undercarriage. Usually used for long-term applications where significant weights and reaches are a factor. Stabilization is accomplished through precise boom and counterweight configuration. Best used on level working areas. Several mobilization units will be required to transport boom units and counterweights. Set-up time can be accomplished with relative ease and speed once all components are available for assembly.

#### Crew Transport

Any vehicle capable of transporting a specified number of crew personnel in a specified manner.

#### Critical Care Transport (CCT)

An ambulance transport of a patient from a scene or a clinical setting whose condition warrants care commensurate with the scope of practice of a physician or registered nurse (e.g., capable of providing advanced hemodynamic support and monitoring, use of ventilators, infusion pumps, advanced skills, therapies, and techniques).

#### Critical Incident Stress Management Team (CISMT)

A Critical Incident Stress Management Team is responsible for the prevention and mitigation of disabling stress among emergency responders in accordance with the standards of the International Critical Incident Stress Foundation (ICISF). Team composition, management, membership and governance varies, but can include psychologists, psychiatrists, social workers, and licensed professional counselors.

## D

### Debris Management Monitoring Team

Team manages oversight of the removal, collection, and disposal of debris following a disaster, to mitigate against any potential threat to the health, safety, and welfare of the impacted citizens, and expedite recovery efforts in the impacted area, and address any threat of significant damage to improved public or private property. To act as the representing agent for the owner/agency hiring for this service providing overall coordination with all levels of government and other Emergency Support Functions (ESFs). Provides daily reports as required. Required liability coverage for all aspects of operations and financial capabilities to manage progressive monitoring processes.

### Debris Management Site Reduction Team

A debris management site reduction team is designed to reduce debris from affected areas, and aims at limiting the modification of the site to the extent practicable to minimize site closure and restoration activities and cost. Teams must have knowledge and expertise to perform varying debris reduction separation techniques, including at minimum four categories: woody vegetative debris, construction or building rubble, hazardous materials [HazMat], and recyclable materials (e.g., aluminum, cast iron, steel, or household white goods or appliances). These methods of debris reduction separation could include grinding or mulching, air curtain incineration or ash, compaction, recycling, or other specialized separation techniques. Teams should have appropriate education and training in managing inspection stations located at such debris reduction sites, recycling locations, or temporary debris staging reduction sites. The management of said inspection stations shall at all times comply with OSHA, ADA, and other regulatory requirements. Routine maintenance of temporary debris staging reduction sites will be undertaken regularly to ensure no additional environmental impacts and that regulatory requirements are met. Upon completion of debris removal, teams shall provide a timely closeout of the debris reduction site by testing soil and water samples to compare with pre-use baselines, remove all unnecessary debris and equipment from the site, conduct environmental audits, and develop a restoration plan for the site. For quality assurance, teams shall provide debris monitors to observe and provide guidance to workers, whether government or contractual, that may assist in the process. All debris collected, separated, and analyzed by such debris reduction site management teams shall be done so in accordance with Federal, State, territorial, Tribal, or local laws, standards, and regulations.

### Debris Management Team

Team facilitates and coordinates the removal, collection, and disposal of debris following a disaster, to mitigate against any potential threat to the health, safety, and welfare of the impacted citizens, and expedite recovery efforts in the impacted area, and address any threat of significant damage to improved public or private property. Team mobilization will vary depending on the team selection, need, and or emergency. Debris removal process will vary depending on the team selection and need.

### Decontamination

The physical or chemical process of reducing and preventing the spread of contaminants from persons and equipment used at a hazardous materials (HazMat) incident. (National Fire Protection Association [NFPA] Standard # 472)

### Deployable Portable Morgue Unit (DPMU)

Mobile equipment and operations facility, fully equipped to support DMORT functions. Add-on to DMORT when no local morgue facilities are available. Supports either standard DMORT or DMORT-WMD.

### Deployment

Departure of team or personnel from home unit or base.

### Desert Search and Rescue Team (Wilderness Rescue Team)

Conducts search and rescue missions, evidence searches, and responds to other disaster or emergency situations in a desert environment.

### Disaster Assessment Team

Governed by type and magnitude of the disaster, the structure of the team consists of people most knowledgeable about the collection or material inventory of the disaster site, and assessing the magnitude and extent of impact on both the population and infrastructure of society. Trained specifically for disaster assessment techniques, team members are multidisciplinary and can include health personnel, engineering specialists, logisticians, environmental experts, and communications specialists. Responsibilities include recording observations and decisions made by the team, photographing and recording disaster site damage, and investigating where damage exists. Teams also analyze the significance of affected infrastructures, estimate the extent of damages, and establish initial priorities for recovery. Disaster assessment teams can perform an initial assessment that comprises situational and needs assessments in the early, critical stages of a disaster to determine the type of relief needed for an emergency response, or they may carry out a much more expedited process termed a rapid assessment.

### Disaster Medical Assistance Team (DMAT) - Basic, National Disaster Medical System (NDMS)

A DMAT is a volunteer group of medical and nonmedical individuals, usually from the same State or region of a State, which has formed a response team under the guidance of the NDMS (or under similar State or local auspices). Usually includes a mix of physicians, nurses, nurse practitioners, physician's assistants, pharmacists, emergency medical technicians, other allied health professionals, and support staff. Standard DMAT has 35 deployable personnel. See Annex A: Federal Response Teams for more detailed information on this Federal Resource.

### Disaster Medical Assistance Team (DMAT) - Burn Specialty, National Disaster Medical System (NDMS)

A Burn Specialty DMAT is a volunteer group of medical and nonmedical individuals, usually from the same State or region of a State, that has formed a response team under the guidance of the NDMS (or State or local auspices), and whose personnel have specific training/skills in the acute management of burn trauma patients. Members of the burn team are especially trained surgeons, nurses, and support personnel that include physical and occupational therapists, social workers, child life specialists, psychologists, nutrition and pharmacy consultants, respiratory therapists, chaplains, and volunteers. Team composition is usually determined ad hoc, based on the mission at hand. See Annex A: Federal Response Teams for more detailed information on this Federal Resource.

Disaster Medical Assistance Team (DMAT) - Crush Injury Specialty, National Disaster Medical System (NDMS)

A Crush Injury Specialty DMAT is a volunteer group of medical and nonmedical individuals, usually from the same State or region of a State, that has formed a response team under the guidance of the NDMS (or State or local auspices), and whose personnel have specific training/skills in the management of crush injury patients. Crush teams deal with crush and penetrating injuries. Usually includes a mix of physicians, nurses, nurse practitioners, physician's assistants, pharmacists, emergency medical technicians, other allied health professionals, and support staff. Team composition is usually determined ad hoc, based on the mission at hand. See Annex A: Federal Response Teams for more detailed information on this Federal Resource.

Disaster Medical Assistance Team (DMAT) - Mental Health Specialty, National Disaster Medical System (NDMS)

A Mental Health Specialty DMAT is a volunteer group of medical and nonmedical individuals, usually from the same State or region of a State, that has formed a response team under the guidance of the NDMS (or State or local auspices), and whose personnel have specific training/skills in the management of psychiatric patients. A multidisciplinary staff of specially trained and licensed mental health professionals provides emergency mental health assessment and crisis intervention services. Usually includes a mix of physicians, nurses, nurse practitioners, physician's assistants, pharmacists, emergency medical technicians, other allied health professionals, and support staff. Team composition is usually determined ad hoc, based on the mission at hand. See Annex A: Federal Response Teams for more detailed information on this Federal Resource.

Disaster Medical Assistance Team (DMAT) - Pediatric Specialty, National Disaster Medical System (NDMS)

A Pediatric Specialty DMAT is a volunteer group of medical and nonmedical individuals, usually from the same State or region of a State, that has formed a response team under the guidance of the NDMS (or State or local auspices), and whose personnel have specific training/skills in the management of pediatric patients. Usually includes a mix of physicians, nurses, nurse practitioners, physician's assistants, pharmacists, emergency medical technicians, other allied health professionals, and support staff. Team composition is usually determined ad hoc, based on the mission at hand. See Annex A: Federal Response Teams for more detailed information on this Federal Resource.

Disaster Mortuary Operational Response Team (DMORT), National Disaster Medical System (NDMS)

A DMORT is a volunteer group of medical and forensic personnel, usually from the same geographic region, that has formed a response team under the guidance of the NDMS (or State or local auspices), and whose personnel have specific training/skills in victim identification, mortuary services, and forensic pathology and anthropology methods. Usually includes a mix of medical examiners, coroners, pathologists, forensic anthropologists, medical records technicians, fingerprint technicians, forensic odontologists, dental assistants, radiologists, funeral directors, mental health professionals, and support personnel. DMORTs are mission-tailored on an ad-hoc basis, and usually deploy only with personnel and equipment specifically required for current mission. See Annex A: Federal Response Teams for more detailed information for this Federal Resource.

Disaster Mortuary Operational Response Team (DMORT) - Weapons of Mass Destruction (WMD), National Disaster Medical System (NDMS)

Same as DMORT except adds additional capability to deal with deceased persons residually contaminated by chemical, biological, or radiological agents.

Disaster Recovery Team

A Disaster Recovery team is governed by type and magnitude of the disaster, the structure of the team consists of people most knowledgeable about the collection or material inventory of the disaster site, as they direct their efforts to recovery of both the population and infrastructure of society. Responsibilities include separating collections and other materials to be salvaged, moving material to be recovered from affected areas to work or other storage locations for drying materials, and packing materials that will require shipment to another facility. Other responsibilities include maintaining records and photographs of the recovery effort, and establishing inventories and data collection of items as they are sent out of the building/affected location to off-site storage or other facilities. The Disaster Recovery Team may also label items that have

lost inventory numbers, label or relabel boxes with locator information, and label boxes for shipment.

Donations Coordinator

The Donations Coordinator is a subsection of a Donations Management Team and has working knowledge of the Individual Assistance and Public Assistance functions under FEMA/State agreement. A Donations Coordinator also has working knowledge of establishing long-term recovery committees on local levels following events. A Donations Coordinator possesses an operational knowledge of all aspects of donations coordination, including management of solicited and unsolicited funds, goods and services from concerned citizens and private organizations following a catastrophic disaster situation.

Donations Management Team

A donations management team consists of one or two persons trained and experienced in all aspects of donations management. The team will be deployed to a disaster-affected jurisdiction after impact to assist in the organization and operations of State or local donations management in support of the affected jurisdiction.

### Dozer (Bulldozer; Track Dozer)

A dozer is specialized equipment used for leveling dirt, debris, and other materials. Equipment is usually associated with large mass movement of various materials. Often used for reducing or increasing grade elevations for roads, airports, and land clearing operations. It is also capable of ripping and moving of ledge rock and other rock materials through the use of a special attachment. Also used for cross-country laying of communication infrastructure through special attachments.

### Dump Trailer

Truck with a trailer attachment that has a dump body permanently attached. Dump body capacities will usually range from 20 yards to 50 yards. The equipment requires a level surface for dumping. The requirements from hauling over the road necessitate the equipment to be licensed by appropriate local jurisdictions. This equipment must meet specific standards for safety for hauling over the road whereby operators are usually required to have a commercial driver's license. This equipment is capable of transporting various aggregates along with construction and demolition debris. Typically used for long hauls.

### Dump Truck, Off Road

Truck with a dump body permanently attached. Equipment is usually used in an off-road situation. Equipment is usually all wheel drive with large mass capacities. It can maneuver in steep, semi-wet conditions and various weather elements. The equipment requires a semi-level surface for dumping. Often used for large mass projects where earth materials are moved within the project area. Often used in airport/road construction and open pit mining.

### Dump Truck, On Road

Truck with a dump body permanently attached. Dump body capacities will usually range from 3 yards to 20 yards. This equipment is capable of transporting various aggregates along with construction and demolition debris.

## E

### Electrical Power Restoration Team

The electrical power restoration team is dependent upon event or disaster size and will be supported by various personal expertise. The teams are usually activated through power company mutual aid agreements. The assignment of personnel and equipment will be dependent upon availability of the releasing mutual aid partner, and will have an agreed timeframe for the release of these said resources. The restoration team coordinates and supports resources of energy producers to quickly restore electrical power to afflicted areas. The host recipients will provide or assist with accommodations for the duration of the team stay. Teams should possess the experience and financial capabilities to support equipment, personnel, and to maintain operations for an indefinite period of time.

#### EMAC Advanced Team (EMAC A-Team)

The EMAC Advance Team is a team (typically comprised of 2 staff) of EMAC trained and experienced personnel designated to deploy to a State to facilitate interstate mutual aid assistance under the Emergency Management Assistance Compact (EMAC). The mission of the EMAC Advance Team is to implement EMAC on behalf of the requesting State by coordinating and facilitating the provision of assistance from other member States in accordance with procedures set forth in the EMAC Standard Operating Procedures.

#### Emergency Medical Task Force

An Emergency Medical Task Force is any combination (within span of control) of resources (Ambulances, Rescues, Engines, Squads, etc) assembled for a medical mission, with common communications, and a leader (supervisor). Self-sufficient for 12 hour operational periods, although it may be deployed longer, depending on need.

#### Emergency Response Team - Advance Element (ERT-A)

The portion of the ERT-A first deployed to the field, usually the State Emergency Operations Center (EOC), and the disaster site to join State emergency management personnel to coordinate Federal assistance, determine the extent and focus of initial disaster response activities, and identify a suitable DFO site.

#### Emergency Response Team - National (ERT-N)

Team provides coordination for Federal response and recovery activities within a State. Once the ERT-N is operational at the Disaster Field Office (DFO), it assumes responsibility from the Regional Operations Center (ROC) staff for management of the Federal response and recovery operation. Major organizational elements of the ERT-N include operations, logistics, information and planning, and administration sections. These four sections coordinate at the staff level and provide mutual support to accomplish priority missions. This coordination includes interaction, consultation, planning, information sharing, operational decision-making, and commitment of resources.

#### Emergency Medical Technician (EMT)

A practitioner credentialed by a State to function as an EMT by a State Emergency Medical Services (EMS) system.

#### EMS Strike Team

A team comprised of five resources or less of the same type with a supervisor and common communications capability. Whether it is five resources or less, a specific number must be identified for the team. For instance, a basic life support (BLS) strike team would be five BLS units and a supervisor or, for example, an advanced life support (ALS) strike team would be comprised of five ALS units and a supervisor.

#### EMS Task Force

A team comprised of five resources or less of the same type with a supervisor and common communications capability. Whether it is five resources or less, a specific number must be identified for the team. For instance, an EMS task force might be comprised of two ALS teams and three BLS teams and a supervisor.

### Engine, Fire (Engine Company)

Any ground vehicle providing specified levels of pumping, water, hose capacity, and staffed with a minimum number of personnel.

### Engineering Services

Depending on the type and magnitude of a disaster or terrorist incident, engineering service expertise will be used accordingly based on discipline specialization. In a general sense, the services that could be provided through engineering services include structural, electrical, civil, mechanical, architectural, geotechnical, and environmental/hazardous materials. Emergency management engineering service providers should possess in-depth knowledge of damage assessment, safety evaluation, transportation infrastructure evaluation per Federal Highway Administration damage assessment procedures, cost recovery per the Stafford Act, and debris management. Additional skills of such engineering service providers should encompass evaluation of hazardous materials, traffic management, utility restoration, water and wastewater quality evaluations, telecommunications operations, and support for the FEMA Urban Search and Rescue Task Force. Engineering service providers should have the ability, experience, and knowledge to interact with the Army Corps of Engineers and other Federal agencies such as the Environmental Protection Agency, along with State, territorial, Tribal, or local building and utility inspectors. Other engineering services that can be provided should include strategic planning for technology, programs, concept development and requirements analysis, system design and integration, tests and evaluation, and integrated logistics support for emergency management.

### Emergency Operations Center (EOC) Management Support Team

Team provides support to an Incident Commander (IC). An IC is an optional member of the team, because it is assumed that an Incident Command/lead has already been established under which these support functions will operate. Typically comprised of an information officer, liaison officer, safety officer, logistics officer, and administrative aide.

### EOC Finance/Administration Section Coordinator

An EOC Finance/Administration Section Coordinator is an individual at the EOC responsible for tracking incident costs and reimbursement accounting, and coordinating/administering support for EOC personnel during disaster operations. This function is part of the standardized ICS structure per the National Incident Management System. If situation warrants, chief/coordinator oversees subunits of this function, including Compensation/Claims, Procurement, Cost, and Time.

### EOC Operations Section Chief

An EOC Operations Section Chief is an individual at the EOC responsible for managing tactical operations at the incident site directed toward reducing the immediate hazard, saving lives and property, establishing situation control, and restoring normal conditions; responsible for the delivery and coordination of disaster assistance programs and services, including emergency assistance, human services assistance, and infrastructure assistance; and oversight of subunits of Operations Section, including Branches (up to five), Division/Groups (up to 25) and Resources as warranted.

### EOC Planning Section Chief

The EOC Planning Section Chief is an individual at the EOC who oversees all incident-related data gathering and analysis regarding incident operations and assigned resources, develops alternatives for tactical operations, conducts planning meetings, and prepares the IAP for each operational period.

### Equipment Transport (Heavy Equipment Transport)

Any ground vehicle capable of transporting a dozer or tractor.

### Evacuation Coordination Team

An Evacuation Coordination Team provides support in State and local emergency response efforts by compiling, analyzing, and disseminating traffic-related information that can be used to facilitate the rapid, efficient, and safe evacuation of threatened populations. Primarily operates in the State or local EOC as an extension of Emergency Support Function (ESF) #1 - Transportation. The mission of the Evacuation Coordination Team is to provide for the protection of life and/or property by removing endangered persons and property from potential or actual disaster areas to areas of less danger through the successful execution of evacuation procedures.

### Evacuation Liaison Team

Team provides support in State and local emergency response efforts by compiling, analyzing, and disseminating traffic-related information that can be used to facilitate the rapid, efficient, and safe evacuation of threatened populations. Primarily operates in the State or local EOC as an extension of Emergency Support Function (ESF) #1 - Transportation.

### Evidence Response Team (ERT)

An Evidence Recovery Team (ERT) is capable of providing 24-hour access to specialized decontamination equipment for chemical release and advice to the On-Scene Coordinator in hazard evaluation; risk assessment; multimedia sampling and analysis; on-site safety, including development and implementation of plans; cleanup techniques and priorities; water supply decontamination and protection; application of dispersants; environmental assessment; degree of cleanup required; and disposal of contaminated material.

### External Resources

Resources that fall outside a team's particular agency, including other agency resources or commercially contracted resources.

## F

### Field Mobile Mechanic

A motor-driven vehicle designed and constructed to provide specified level of equipment capacity and mechanically trained personnel.

#### Field Veterinary Medical Officer (Veterinary Medical Field Officer)

A professional veterinarian, who works to implement animal and poultry disease control programs. Duties can include supervising animal and poultry disease control and eradication services; contacting animal and poultry owners and organizations to explain disease control programs and to provide veterinary medicine advice; conducting epidemiologic investigation of disease outbreaks; inspecting health certificates, livestock auctions, and animal and poultry dealer records; monitoring animal and poultry production and marketing activities; and preparing surveys and reports of disease prevalence.

#### Flash Fire Protective Ensemble

A compliant vapor-protective ensemble that is also certified as being compliant with the additional requirements for limited protection against chemical flash fire for escape only. (National Fire Protection Association [NFPA] Standard # 1991)

#### Flat Bed Trailer Truck

Truck with a trailer attachment usually used for the transportation of goods and other commodities across long distances. Depending on the payload, some flat bed trucks have expandable tandems for meeting weight requirements. Flatbeds are usually a fifth-wheel mounted assembly. Payloads can be as much as 80,000 pounds and more if permitted.

#### Food Dispenser Unit (Food Dispenser)

Any vehicle capable of dispensing food to incident personnel.

## G

#### Generators

Diesel-fueled engine generators are used to support electrical requirements at facilities of various sizes such as hospitals, housing, plants, and commercial stores. Units are usually mounted on tow behind or trailer mobilized equipment. Deployment and set up can be accomplished within hours.

#### Geographical Incident Management Teams, Firefighting

A Geographical Incident Management Team is an interagency organization under the auspices of the Geographical Area Coordination Group composed of the Incident Commander (IC), and appropriate general and command staff personnel assigned to an incident, trained and certified to the Type II level. Type II level personnel may lack the degree of training and experience of Type I personnel in managing complex incidents at the type one level.

#### Ground Ambulance (Medical Transport)

A ground transport vehicle configured, equipped, and staffed to respond to, care for, and transport patients.

## H

### Hazardous Materials (HazMat)

Any material that is explosive, flammable, poisonous, corrosive, reactive, or radioactive, or any combination thereof, and requires special care in handling because of the hazards it poses to public health, safety, and/or the environment. Any hazardous substance under the Clean Water Act, or any element, compound, mixture, solution, or substance designated under the Comprehensive Environmental Response, Compensation, and Liability Act (CERCLA); any hazardous waste under the Resource Conservation and Recovery Act (RCRA); any toxic pollutant listed under pretreatment provisions of the Clean Water Act; any hazardous pollutant under Section 112 of the Clean Air Act; or any imminent hazardous chemical substance for which the administrator has taken action under the Toxic Substances Control Act (TSCA) Section 7. (Section 101[14] CERCLA)

### Hazardous Material Response Team

An organized group of individuals that is trained and equipped to perform work to control actual or potential leaks, spills, discharges, or releases of HazMat, requiring possible close approach to the material. The team/equipment may include external or contracted resources.

### Hazardous Materials Company

Any piece of equipment having the capabilities, personal protective equipment (PPE), equipment, and complement of personnel as specified in the Hazardous Materials Company types and minimum capabilities. The personnel complement will include one member who is trained to a minimum level of assistant safety officer - HazMat.

### Hazardous Materials Incident

Uncontrolled, unlicensed release of HazMat during storage or use from a fixed facility or during transport outside a fixed facility that may impact public health, safety, and/or the environment.

### HazMat Task Force

A group of resources with common communications and a leader. A HazMat Task Force may be preestablished and sent to an incident, or formed at the incident.

### HazMat Trained and Equipped

To the level of training and equipment defined by the Occupational Safety and Health Administration (OSHA) and the National Fire Protection Association (NFPA).

### Helicopters, Firefighting (Helicopter or Copter)

An aircraft that depends principally on the lift generated by one or more rotors for its support in flight. Capable of the delivery of firefighters, water, or chemical retardants (either a fixed tank or bucket system), and internal or external cargo.

### Helitack Crew (Firefighting Crew)

A crew of firefighters specially trained and certified in the tactical and logistical use of helicopters for fire suppression.

### Helitanker

A helicopter equipped with a fixed tank, Air Tanker Board certified, capable of delivering a minimum of 1,100 gallons of water, foam, or retardant (current model helicopter certified, Sikorsky S-64 Sky-Crane).

### Helitanker (Firefighting Helicopter)

A helicopter equipped with a fixed tank, Air Tanker Board certified, and capable of delivering a minimum of 1,100 gallons of water, retardant, or foam.

### High-Angle Rope Rescue (Rope Rescue; Technical Rock)

Rescue in which the load is predominately supported by the rope rescue system.

### Hydraulic Excavator (Large Mass Excavation 13cy to 3cy Buckets)

Track undercarriage construction equipment used to excavate and load earth, blasted rock, sands, and other types of aggregate, also used to load or handle demolition materials. Provides rapid excavation for construction and repair of runways, roads and trails, railroads, pipelines, waterways, and quarry operations. Larger hydraulic excavators may require some dismantling in meeting mobilization requirements. Dismantled pieces usually require additional mobilization support. Multiple accessories are available for varying tasks.

### Hydraulic Excavator (Medium Mass Excavation 4cy to 1.75cy Buckets)

Track undercarriage construction equipment that is a track-mounted, hydraulic-controlled, excavating system used to excavate and load earth, blasted rock, sands, and other types of aggregate, also used to load or handle demolition materials. Provides rapid excavation for construction and repair of runways, roads and trails, railroads, pipelines, waterways, and quarry operations. Slightly smaller than the larger hydraulic excavator category, these usually do not require dismantling for mobilization requirements. If dismantling is considered, it may require additional mobilization support. Multiple accessories are available for varying tasks.

### Hydraulic Truck Cranes

Highly flexible and mobile self-propelled cranes that can be deployed with ease. They usually do not require any setup or special mobilization consideration. Depending on the actual lifting requirements, these cranes come in various sizes and capabilities. Stabilizers include outrigger for stability.

### Hyperspectral Imaging Support Team Civil Air Patrol (CAP)

A CAP Hyperspectral Imaging Support Team provides specialized ground support to analyze and interpret data provided by CAP ARCHER Hyperspectral Imaging systems. ARCHER is an airborne reconnaissance asset that is only available through the CAP at the request of Federal, State, and local agencies being fielded in 2004.

I

### Ice Search and Rescue Team (Water Rescue Team; Public Safety Dive Team)

Team locates and rescues individuals trapped under ice-capped water.

#### Illumination Unit (Lighting Plant)

A portable light-generating unit capable of providing three to six lights of 500 watts each with extension cords from 500 feet to 1,000 feet to provide specified level of illumination capacity.

#### Incident Management Team

A command team comprised of the Incident Commander (IC), appropriate command, and general staff personnel assigned to an incident. (Source: FIRESCOPE)

#### Incident Management Team, Animal Protection

An Animal Protection Incident Management Team, when deployed, will assess the emergency situation and determine the number of operational strike teams that will be required for rescuing, transporting, and sheltering of animals.

#### Incident Management Team, Firefighting

An Incident Management Team is an interagency organization under the auspices of NWCG composed of the Incident Commander (IC) and appropriate general and command staff personnel assigned to an incident, trained and certified to the Type I level. Type I level personnel possess the highest level of training available and are experienced in the management of complex incidents.

#### Individual Assistance Disaster Assessment Team

An Individual Assistance Disaster Assessment Team is responsible for providing expert assessments of the disaster situation pertaining to claims for individual assistance and other programs.

#### Individual Assistance Disaster Assessment Team Leader

An Individual Assistance Disaster Assessment Team Leader is the individual responsible for leading the individual assistance disaster assessment team and possesses an administrative knowledge of Individual Assistance areas. (See Individual Assistance Disaster Assessment Team.)

#### In-House

Assets or expertise specifically owned, possessed, directed, and/or controlled by the responding entity.

#### Instrument Flight Rules (IFRs)

Set of rules, guidelines, and procedures that the Federal Aviation Administration (FAA) has established for pilots to operate aircraft in marginal weather conditions, usually defined as ceilings below 1,000 feet/ visibility less than 3 miles.

#### Interagency Buying Team, Firefighting

The Interagency Wildland Fire Community supports a Buying Team. A National Buying Team supports the procurement efforts through the local administrative staff and is authorized to procure a wide range of services, supplies, and land and equipment rentals. In addition, the buying team leader has the responsibility of coordinating property accountability with the supply unit leader.

International Medical Surgical Response Team (IMSuRT), National Disaster Medical System (NDMS)

An IMSuRT is a volunteer group of medical and nonmedical individuals, usually from the same State or region of a State, that has formed a response team under the guidance of the NDMS and the State Department, and whose personnel and equipment give it deployable medical and surgical treatment capability, worldwide. It is the only NDMS medical team with surgical operating room capability. Full team consists of roughly 26 personnel, which is a mix of physicians, nurses, medical technicians, and allied personnel. See Annex A: Federal Response Teams for more detailed information on this Federal Resource.

J

K

L

Lattice Truck Cranes

This is the larger of the wheel cranes. Usually used for long-term applications where significant weights and reaches are a factor. Stabilizers include outriggers for stability. Several mobilization units will be required to transport boom units and counterweights. Set-up time can be accomplished with relative ease and speed once all components are available for assembly.

Law Enforcement Aviation - Fixed-Wing

Fixed-wing aircraft of various sizes used for surveillance, extraditions, personnel, and cargo transportation.

Law Enforcement Aviation - Helicopters - Patrol and Surveillance

Helicopters of various sizes to provide multifunction aerial support for ground operations.

Law Enforcement Canine Teams - Cadaver Detecting Dogs

Patrol dogs trained to find and passively alert on decaying human tissues, bones, and fluids.

Law Enforcement Canine Teams - Explosive Detecting Dogs

Patrol dogs trained to detect and passively alert on a variety of odors indicating the presence of explosive devices.

Law Enforcement Canine Teams - Narcotics Detecting Dogs

Patrol dogs capable of finding and alerting on cocaine, marijuana, methamphetamines, heroin, and their derivatives.

#### Law Enforcement Canine Teams - Patrol Dogs (K-9s)

Trained canine units providing law enforcement with a nonlethal means of apprehending dangerous criminal offenders; detecting intruders and alerting handlers to their presence; pursuing, attacking, and holding criminal offenders who resist apprehension; searching and clearing buildings and large open areas for criminals; tracking lost children or other persons; detecting the presence of certain narcotics, explosives, and tobacco products; locating deceased subjects, crime scenes, and minute physical evidence; and providing a strong psychological deterrent to certain types of criminal misconduct.

#### Law Enforcement Dive Teams - Evidence Recovery

Underwater teams used to recover evidence.

#### Law Enforcement Dive Teams - Recovery

Underwater teams used to recover drowning victims and lost vessels.

#### Liquid Splash-Protective Ensemble

Multiple elements designed to provide a degree of protection for emergency response personnel from adverse exposure to the inherent risks of liquid-chemical exposure occurring during hazardous materials (HazMat) emergencies and similar operations. The liquid splash-protective ensemble is either an encapsulating or nonencapsulating ensemble. (National Fire Protection Association [NFPA] Standard # 1992)

#### Low-Angle Rope Rescue (Rope Rescue)

Rescue in which the load is predominately supported by itself and not the rope rescue system.

## M

#### Management Support Team (MST), National Disaster Medical System (NDMS)

An MST is a command and control team that provides support and liaison functions for other NDMS teams in the field. MSTs are usually staffed by a mix of Federal employees and are constituted on an ad-hoc, mission-specific basis. An MST (perhaps as small as one or two individuals) always accompanies an NDMS unit on a deployment. See Annex A: Federal Response Teams for more detailed information on this Federal Resource.

#### Mine and Tunnel Search and Rescue Team

A specially trained and equipped team that searches for, rescues, and/or recovers individuals from working or abandoned mines and tunnels.

#### Mine Rescue Team (Confined Space Rescue)

Team locates and rescues individuals lost or trapped in active or abandoned mine shafts or other below-ground entrapments.

Mobile Communications Center (Mobile Emergency Operations Center [EOC]; Mobile Command Center; Continuity of Operations Vehicle)

A vehicle that serves as a self-sustaining mobile operations center capable of operating in an environment with little to no basic services, facilitating communications between multiple entities using an array of fixed and/or wireless communications equipment, providing appropriate work space for routine support functions, and providing basic services for personnel in short-term or long-term deployments.

Mobile Feeding Kitchen (Mobile Field Kitchen; Rapid Deployment Kitchen)

A containerized kitchen that can be positioned forward in fulfillment of Emergency Support Function (ESF) #11 - Food and Water. The units are used to support feeding operations at emergency incidents.

Mobile Field Force (Crowd Control Teams; Riot Dispersal Team)

Police units trained in handling large crowds and riot situations, including specialized training in crowd dispersal, tactics, and special weapons.

Mobile Kitchen Unit

A unit designed and constructed to dispense food for incident personnel providing a specified level of capacity.

Mountain Search and Rescue Team (Wilderness Rescue Team)

Team searches for and rescues people either above the timberline or in high-angle areas below the timberline, which can include glacier, crevasse, backcountry, alpine search and rescue, and other aspects of the environment.

N

National Response Framework (NRF)

The National Response Framework (NRF) presents the guiding principles that enable all response partners to prepare for and provide a unified national response to disasters and emergencies. It establishes a comprehensive, national, all-hazards approach to domestic incident response. The National Response Plan was replaced by the National Response Framework effective March 22, 2008.

The National Response Framework defines the principles, roles, and structures that organize how we respond as a nation. The National Response Framework:

- describes how communities, tribes, states, the federal government, private-sectors, and nongovernmental partners work together to coordinate national response;
- describes specific authorities and best practices for managing incidents; and
- builds upon the National Incident Management System (NIMS), which provides a consistent template for managing incidents.

National Urban Search and Rescue (US&R) Incident Support Team (IST)

ISTs are components of ERT-As that provide Federal, State, and local officials with technical assistance in the acquisition and use of search and rescue resources through advice, Incident Command assistance, management, and coordination of US&R task forces and obtaining

logistic support. See Annex A: Federal Response Teams for more detailed information on this Federal Resource.

#### National Strike Force, U.S. Coast Guard

The U.S. Coast Guard National Strike Force was created in 1973 as a Coast Guard special force under the National Contingency Plan (NCP/see 40 CFR 300.145) to respond to oil and hazardous chemical incidents. The NSF consists of three interoperable regionally based Strike Teams: Atlantic, Gulf and Pacific, and the Public Information Assist Team (PIAT). The NSF supports USCG and EPA Federal On-Scene Coordinators (FOSCs) to protect public health, welfare, and the environment. In recent years, the capabilities have been expanded to include response to weapons of mass destruction (WMD) incidents, as well as incident management assistance.

#### National Veterinary Response Teams (NVRT)

The five National Veterinary Response Teams are part of Health and Human Services and the National Disaster Medical System. The NVRT are highly trained teams composed of veterinarians, veterinary technicians, toxicologists and other medical and lay support personnel. They can deploy within 12-24 hours to a disaster area and are self sufficient for 72 hours. When a federal disaster, either natural or man made, is declared and a request for NVRT assistance has been made by the State Veterinarian, teams are deployed to the affected area. Teams are capable of performing assessments of the veterinary infrastructure, establishing a veterinary field hospital, animal decontamination/hazardous materials, providing care for urban search and rescue and cadaver dogs, and identifying public health issues.

#### O

Occupational Health & Safety Specialists (Occupational Physicians; Occupational Health Nurses; Industrial Hygienists; Occupational Safety Specialists; Occupational Safety & Health Technicians; Health and Safety Inspectors; Industrial Hygienists) Personnel with specific training in occupational safety and health and topics such as workplace assessment or occupational medicine. Occupational health and safety specialists and technicians help keep workplaces safe and workers in good health unscathed. They promote occupational health and safety within organizations by developing safer, healthier, and more efficient ways of working. They analyze work environments and design programs to control, eliminate, and prevent disease or injury caused by chemical, physical, and biological agents or ergonomic factors. They may conduct inspections and enforce adherence to laws, regulations, or employer policies governing worker health and safety.

## P

### Paramedic

A practitioner credentialed by a State to function at the advanced life support (ALS) level in the State Emergency Medical Services (EMS) system.

### Personal Protective Equipment (PPE)

Equipment and clothing required to shield or isolate personnel from the chemical, physical, thermal, and biological hazards that may be encountered at a hazardous materials (HazMat) incident. (National Fire Protection Association [NFPA] Standard # 472)

### Public Assistance Coordinator (PAC)

The Public Assistance Coordinator (PAC) is a subsection of the Public Assistance Team (PAT). The PAC is assigned to work with a Public Assistance (PA) applicant from declaration to funding approval. The PAC must possess an in-depth working knowledge of disaster relief laws, regulations, PA programs, and recovery roles of government and the private sector.

### Public Safety Dive Team

Team assists with location and recovery of drowning victims, evidence in criminal cases, and abandoned vehicles and provides safety divers for special events.

### Public Safety Dive Team, Law Enforcement (Dive Team)

A Law Enforcement Public Safety Dive Team is a group of law enforcement divers equipped and trained to perform a variety of functions, including evidence search and recovery.

## Q

## R

### Radio Direction Finding Team (Electronic Search Team)

Teams use radio direction finding equipment to locate distress beacons (such as emergency locator transmitters, emergency position indicating radio beacons, and personal locator beacons). Beacons may be located in remote or populated areas, as teams can expect to work in varied localities, including airfields, marinas, and geographically secluded areas.

### Radiological Material

Any material that spontaneously emits ionizing radiation. (National Fire Protection Association [NFPA] Standard # 472)

### Rapid Needs Assessment (RNA) Team

Team provides a rapid assessment capability immediately following a major disaster or emergency. The RNA Team will collect and provide information to determine requirements for critical resources needed to support emergency response activities. The RNA Team is responsible for assessing both overall impact of a disaster event and determining Federal and/or State immediate response requirements.

## Release

Any spilling, leaking, pumping, pouring, emitting, emptying, discharging, injecting, escaping, leaching, dumping, or disposing into the environment (including the abandonment or discharging of barrels, containers, and other closed receptacles containing any hazardous substance or pollutant or contaminant). (Section 101[22] CERCLA)

## Rescue

To access, stabilize, and evacuate distressed or injured individuals by whatever means necessary to ensure their timely transfer to appropriate care or to a place of safety.

## Rope Rescue (High-Angle Rescue; Low-Angle Rescue; Technical Rescue)

To rescue through the use of rigging techniques, anchor systems, belays, mechanical advantages, subject extrication techniques, and low- and high-angle rescue techniques.

## S

### Search

To locate an overdue or missing individual, individuals, or objects.

### Search Suit

Suit made of Kevlar(r) and Nomex 3, often used by, but not limited to, bomb squad personnel, significantly lighter than bomb suits; allows user to conduct search with increased mobility.

### Shelter Management Team

Team provides managerial and operational support for a shelter during an emergency. Responsibilities of the team may include all or some of the following: operating the shelter; establishing security; ensuring the availability of adequate care, food, sanitation, and first aid; selecting and training personnel to perform operational tasks; monitoring contamination; performing decontamination; establishing exposure control and monitoring; monitoring overpressure and filtration systems; performing post-event reconnaissance; and directing egress.

### Sheltering Team, Large Animal, Animal Protection

An Animal Protection Large Animal Sheltering Team will deploy for a minimum of 7 days and will be responsible for advising and supporting local efforts in setting up a large animal shelter.

### Sheltering Team, Small Animal, Animal Protection

An Animal Protection Small Animal Sheltering Team will deploy for a minimum of 7 days and will be responsible for advising and supporting local efforts in setting up a small animal shelter.

### Special-Needs Shelter

A refuge specifically designed to accommodate individuals with special medical needs who are not ill enough to require hospitalization. These shelters are supported by volunteer doctors and nurses and often have backup electric capability to support those with medical equipment reliant on electricity.

## Sustainability

Ability to continue response operations for the prescribed duration necessary.

## Special Weapons and Tactics (SWAT)/Tactical Teams

SWAT teams are specially trained to handle high-risk situations and specialized tactical needs. Team members have advanced skills beyond that of typical patrol officers.

## Strike Team, Large Animal Rescue, Animal Protection

An Animal Protection Large Animal Rescue Strike Team is a six-member team capable of completing an average of one rescue every 30 minutes in a suburban setting and one rescue every hour in rural settings.

## Strike Team, Small Animal Rescue, Animal Protection

An Animal Protection Small Animal Rescue Strike Team is a six-member team capable of completing an average of one rescue every 30 minutes in a suburban setting and one rescue every hour in rural settings.

## Swift Water Search and Rescue Team (Flood Search and Rescue; Water Rescue Team)

Team conducts surface search and rescue operations on waterways where the water is moving fast enough to produce sufficient force to present a life and safety hazard to a person entering it.

## T

### Tender, Foam (Firefighting Foam Tender)

The apparatus used to mix concentrate with water to make solution, pump, and mix air and solution to make foam, and transport and apply foam.

### Tender, Fuel (Fuel Tender)

Any vehicle capable of supplying fuel to ground or airborne equipment.

### Tender, Helicopter (Helicopter Tender)

A ground service vehicle capable of supplying fuel and support equipment to helicopters.

### Total Containment Vessel (TCV)

A TCV is designed to transport explosive or chemical devices, fully enclosed. Used for explosive and hazardous materials (HazMat).

### Tractor Trailer

Truck with a trailer attachment used for mobilization of various goods, supplies, and equipment. Predominately used for moving equipment, either long distances, overweight and over-width equipment, or equipment not permitted for over the road purposes, including track equipment. Trailers are either fifth-wheel mounted or tow behinds, depending on the size of the load. Also used for long- and short-haul needs, including smaller equipment. Loading and off-loading can be accomplished from either the front or the rear. Usually the rear loading will require ramps. If loading is done from the front, the trailer will be detached from the truck allowing use of the small ramps for loading purposes. Front-end loading using a detachable trailer is usually used for oversized equipment. Payloads can be as much as 80,000 pounds and more if permitted.

### Transport Team, Large Animal, Animal Protection

An Animal Protection Large Animal Transport Team will deploy for a minimum of 5 days and will be responsible for transporting large animals from a disaster site. All required vehicles will accompany team.

### Transport Team, Small Animal, Animal Protection

An Animal Protection Small Animal Transport Team will deploy for a minimum of 5 days and will be responsible for transporting large animals from a disaster site. All required vehicles will accompany team.

### Tub Grinder

Specialized equipment designed to grind heavy brush, pallets, demolition material, land-clearing debris, and yard waste. Units are equipped with hammermills ranging from 26 inches to 36 inches that serve as steel fixed hammers or doubled-edged cutting tools. Tub grinders possess hydraulic tub tilt to provide safe access to the hammermill during maintenance, and have a horsepower range from 157 to 1,050. Tub grinders shrink space requirement by a ratio of 10:1 yards. Feeding the equipment requires either a front-end loader or other hydraulic equipment such as an excavator with a thumb attachment or cherry-picker. Processed materials can be stockpiled using conveyor systems or with stockpiled using a front-end loader. Depending on the size of the equipment's processing capabilities, it may be possible to feed and stockpile with one front-end loader. Equipment operations and controls are remotely managed, usually away from any potential flying debris. Mobilization is required, either with a tractor-trailer hook-up, fifth-wheel only, or pindle-hook option. The processing area should be firm soil with sufficient room for stockpiling pre- and post-products; however, track tub grinders are available for special processing needs. Over-width escort services would be used for wide loads.

## Tug Boat

Tug boats are commercial water vessels that move or assist in the movement of propelled and non-propelled water vessels, primarily with ship docking and barge towing. Ship-assist tugs are generally port or harbor related, while barge towing tugs are typically port-to-port transporters up and down rivers, inlets, and the coastline. With different sizes and modifications for varying tasks, tug boats require specially trained operators or captains licensed and subject to jurisdiction of the U.S. Coast Guard, and are also subject to random drug and alcohol testing procedures. Crew manifests generally range from 2 to 6+ individuals, including a captain and an inland waterways river pilot, required by law, who serves as servant to the vessel master. Docking pilots (specialists) should be used where possible, as they serve to enhance communications between the assisted ship and the tug boat in "unfamiliar waters." These crew members will, at times, live on the tug itself or on-call from nearby homes, and have a varying schedule dependent on the tug company. Tug boats also consist of model bows or pointed bows for towing while push tugs have square bows. Specially equipped tug boats can be specialized to serve as spray boats or firefighting boats for the purposes of emergency situations. Tug boats strongly rely on the need for communication as many assisted ships either originate in foreign countries or are unfamiliar with inland or harbor waters. In emergencies, the U.S. Coast Guard houses a master list of tug boats that can be contacted for assistance. Most tug boat owners and operators may belong to their trade association, the American Waterways Operators (AWO).

## U

### Urban Search and Rescue (US&R)

US&R involves the location, rescue (extrication), and initial medical stabilization of victims trapped in confined spaces.

### Urban Search and Rescue (US&R) Task Force (US&R Team)

Federal asset that conducts physical search and rescue in collapsed buildings; provides emergency medical care to trapped victims; assesses and controls gas, electrical services, and hazardous materials (HazMat); and evaluates and stabilizes damaged structures. See Annex A: Federal Response Teams for more detailed information on this Federal Resource.

## V

### Vapor Protective Ensemble

A vapor protective ensemble or garment that is intended for use in an unknown threat atmosphere or for known high health risk atmospheres is vapor tight, and is in compliance with National Fire Protection Association (NFPA) Standard # 1991, "Standard on Vapor-Protective Ensembles for Hazardous Materials Emergencies."

### Veterinary Epidemiologist

A practitioner who studies factors influencing existence and spread of diseases among humans and animals, particularly those diseases transmissible from animals to humans. Required to hold degree of Doctor of Veterinary Medicine.

### Visual Flight Rules (VFRs)

Set of Federal Aviation Administration (FAA) rules, guidelines, and procedures that apply to aircraft when a pilot is conducting flight with visual reference to the ground.

### Volcano Search and Rescue Team (Wilderness Rescue Team)

Team provides technical rescue, avalanche rescue, and other aspects of mountain rescue services applicable for search and rescue operations in and around the surface of a volcano.

### Volunteer Agency Liaison (VAL)

The Volunteer Agency Liaison serves as the central point between government entities and volunteer organizations in the coordination of information and activities of VOADs (Volunteer Organizations Active in Disasters) responding in times of disaster.

## W

### Water Purification Team (Emergency Water Teams)

A water purification team is a specialized team designed to support the Emergency Water Mission in support of the Federal Response Plan (FRP). Teams provide an emergency supply of potable water, both bottled and bulk, to include procurement, transportation, and distribution to impacted areas for usage by both the general public and response personnel. FEMA, who is the lead agency under the FRP for coordinating all Federal activities following a natural disaster or manmade emergency, assigned the Department of Defense (U.S. Army Corps of Engineers) as the lead agency in support of Emergency Support Function (ESF) #3 - Public Works and Engineering, that includes tasking of emergency potable water. Team members are fully trained and knowledgeable of water certification requirements and daily consumption rates, the procurement process including the Advanced Contracting Initiative (ACI) Water Contract, which is a supply and service contract for procuring bottled and bulk water, transportation, security measures, distribution processes, emergency management, and have previously worked with or able to build rapport with State and local governments. Teams coordinate with FEMA, State and local governments, and other ESF elements to scope the magnitude of the water mission. After mission scoping, teams assist FEMA in writing the mission assignment and tasks, estimating mission-funding requirements, and assessing when all emergency needs have been met and the water mission can be closed out. Emergency water teams are responsible for timely procurement and delivery of potable water to all Staging Areas and distribution sites. Teams are deployed on 30-day rotations, with 3 to 5-day transition periods, however, the average water mission only lasts about 2 to 3 weeks. In events with warning, such as hurricanes, emergency water teams are predeployed to the region and contract for the delivery of a small amount of potable water to predesignated Staging Areas so that water deliveries can begin immediately following the event. Following the event, the teams focus on meeting all post-declaration water mission mandates tasked by FEMA to ESF #3, including mass distribution at appropriate staging areas.

### Water Search and Rescue Team

Team conducts surface and subsurface search and rescue operations in all-water environments, including swift water and flood conditions. Water rescue teams come with all team equipment required to safely and effectively conduct operations. Water rescue teams can be assigned to special events to provide for the safety of citizens.

## Water Truck

A truck with a permanently mounted water tank with the capabilities of dispensing potable or nonpotable water. The dispensing is handled through gravity or pumped. For pumping action, the truck's engine or transmission is usually used to generate the requirement dispensing energy. Uses can range from delivering potable water to shelter locations, nonpotable form for irrigation, assisting in wildfire situations, dust control, compaction requirements, flushing of storm conveyance sanitary sewer lines, and washing areas of dirt, debris, and dust.

## Weapons of Mass Destruction (WMD)

(1) Any destructive device as defined in section 921 of this title ("destructive device" defined as any explosive, incendiary, or poison gas, bomb, grenade, rocket having a propellant charge of more than 4 ounces, missile having an explosive or incendiary charge of more than 1/4 ounce, mine or device similar to the above); (2) any weapon that is designed or intended to cause serious bodily injury through the release, dissemination, or impact of toxic or poisonous chemicals, or their precursors; (3) any weapon involving a disease organism; or (4) any weapon that is designed to release radiation or radioactivity at a level dangerous to human life. (United States Code, Title 18-Crimes and Criminal Procedure, Part I-Crimes, Chapter 113B-Terrorism, Sec. 2332a)

## Wheel Dozer

A wheel dozer is a rubber-tired piece of equipment used for spreading and compacting without vibratory means. This equipment can accomplish mass leveling tasks for agriculture, construction, forestry, heavy construction, industrial needs, open pit mining, and similar earth moving requirements. Rubber tires contribute by compacting the earth being moved during the process of leveling. Leveling in layers to maximize density requirements usually performs this action. Layered leveling limits will also be accommodated by the weight and size of the equipment being employed. Equipment can operate on slight slopes. Equipment capacities can vary from 100,000 lbs. at 33 yd<sup>3</sup> to 22,000 lbs. at 3.5 yd<sup>3</sup>. Mobilization is usually required. A front-end loading detachable trailer is usually the preferred option. Over-width escort services would be used for wide loads.

## Wheel Loaders (Large: 41cy to 8cy)

Rubber-tired equipment used for moving and/or loading large masses of various aggregate materials or demolition debris. Materials are usually loaded into material carrying equipment, such as dump trucks or stockpiled, processed, and/or moved around onsite. Accessories are also available for handling bulky materials/waste. A tractor-trailer unit usually handles the mobilization. Depending on the bucket size, dismantling is usually not an issue. Depending on the width, a transport permit may be required, along with escort services.

## Wheel Loaders (Medium to Small: 7cy to 2cy)

Rubber-tired equipment used for moving and/or loading small to large masses of various aggregate materials or demolition debris. Materials are usually loaded into material carrying equipment, such as dump trucks or stockpiled, processed, and/or moved around onsite. Accessories are also available for handling bulky materials/waste. A tractor-trailer unit usually handles the mobilization but is not necessary for some pieces of equipment. Mobilization without a transport usually requires an operator's license. Usually the width of this equipment does not require a transport permit but may still require an escort service.

#### Wilderness Search and Rescue Team (Ground Search and Rescue)

Team provides response search and rescue services, including all-weather search and rescue of missing persons, search and rescue management capabilities, trained ground search teams of all levels, technical rescue specialists, specialized wilderness medical personnel, and safety and survival education.

#### Wilderness Search and Rescue Team (Ground Search and Rescue Team)

Team provides ground search and rescue services, including all-weather search and rescue of missing persons, search and rescue management capabilities, evidence collection, trained ground search teams of all levels, technical rescue specialists, specialized wilderness medical personnel, and safety and survival education.

#### WMD Chem/Bio

A short-hand phrase for "weapons of mass destruction, chemical/biological," in reference to those substances that were developed by military institutions to create widespread injury, illness, or death.

X

Y

Z

#### Zone, Contamination Reduction (Warm Zone)

The area between the Exclusion Zone and the Support Zone. This zone contains the personnel decontamination station. This zone may require a lesser degree of personnel protection than the Exclusion Zone. This separates the contaminated area from the clean area and acts as a buffer to reduce contamination of the "clean" area. (U.S. Coast Guard Incident Management Handbook, 2001 edition)

#### Zone, Exclusion (Hot Zone)

The area immediately around a spill or release and where contamination does or could occur. The innermost of the three zones of a hazardous substances/material incident. Special protection is required for all personnel while in this zone. (U.S. Coast Guard Incident Management Handbook, 2001 edition)

#### Zone, Support (Cold Zone)

The "clean" area outside of the contamination control line. In this area, equipment and personnel are not expected to become contaminated. Special protective clothing is not required. This is the area where resources are assembled to support the hazardous substances/materials release operations. (U.S. Coast Guard Incident Management Handbook, 2001 edition)